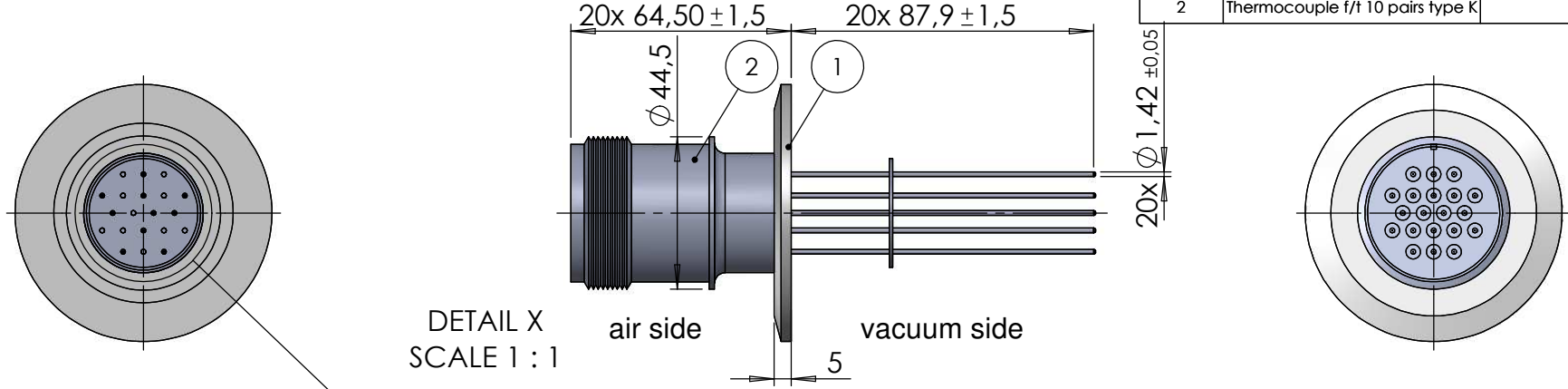
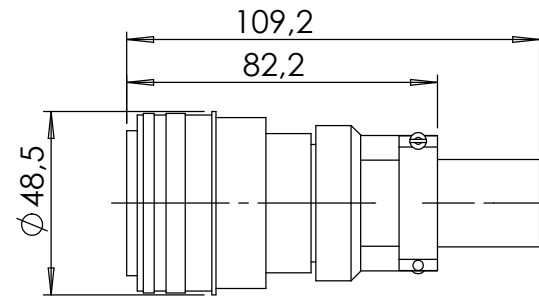


POS-NR.	DESCRIPTION	MATERIAL	QTY
1	modified flange DN50 KF	1.4301 (304)	1
2	Thermocouple f/t 10 pairs type K		1

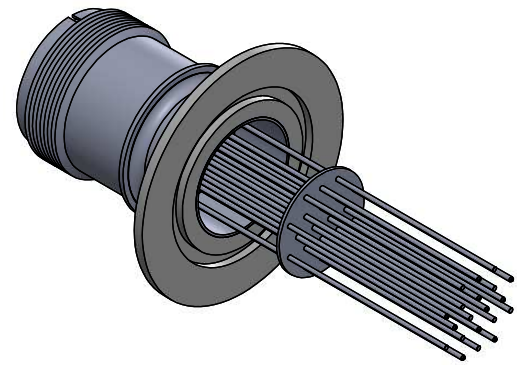


air side connector included



CHROMEL(+)	A,C,E,G,J,L,N,Q,S,V
ALUMEL(-)	B,D,F,H,K,M,P,R,T,U

- Alumel conductors (-) with flat ends at vacuum side.
- CHROMEL conductors (+) with radius ends at vacuum side.



Bemerkungen (Remarks)				Freimaßtoleranz (Standard Tolerance)	Maßstab (Scale)	Rauheit (Roughness)	europ.Projektion		
All informations provided in this drawing is considered to be confidential, proprietary and secret information. If is intended only for the use of individual or entity to whom it is sent. Individual or entity agrees to not disseminate or copy this information to anyone other than originally specified without the written consent Alletra GmbH.					1:2				
				Datum	Name			Material, Standard Oberfläche (Treatment)	Kanten (edges)
				Design 27.02.2023	AD			Bezeichnung (Title) thermocouple f/t, type K, 10 pairs on flange DN50 ISO-KF	Gewicht (weight) 9
Drawn 27.02.2023	AD	Page: 1 Pages: 1							
Index						Revision			
Modification				Zeichnungsnummer (Drawing No.) 263-TCK-MS-10-K50		Format A4			
Date				Datei (File) C:\PDMstore\C:\PDMstore\					
Name									