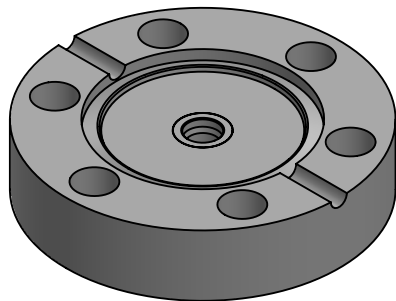
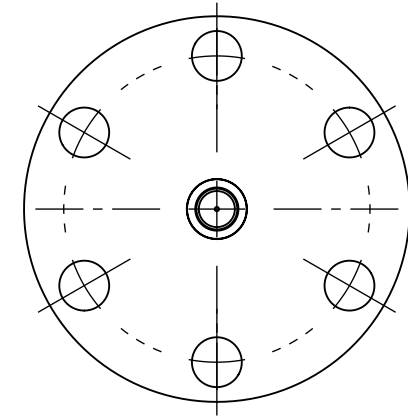
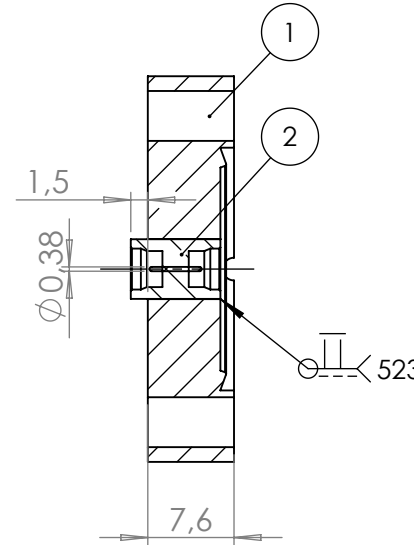
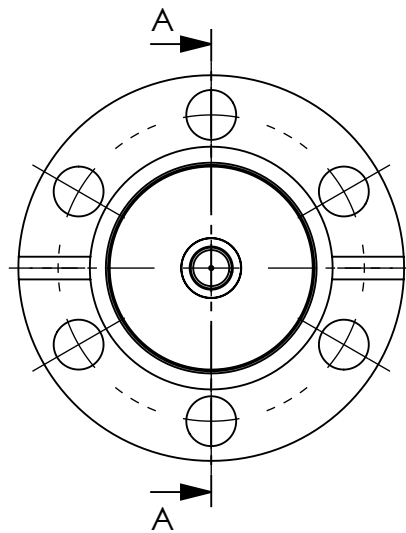


POS. NO.	DESCRIPTION	MATERIAL	QTY
1	modified flange DN16 CF	1.4404 (316L)	1
2	SMP feedthrough, double sided, smooth bore	1.4306 (304L)	1

SECTION A-A



<1 E-10 mbar\*/sec, He, according to DIN EN 1779-A3  
Definition Leckprüfung (definon leak check)

Zeichnung Nutzung (SCOPE OF DRAWING) Drawing external usage for customer		Prüfung Zubehör. (CON + HSG CHECK)		Bemerkung (REMARKS)		Kanten (EDGES)		PROJECTION	
All informations provided in this drawing is considered to be confidential, proprietary and secret information. It is intended only for the use of individual or entity to whom it is sent. Individually or entity agrees to not disseminate or copy this information to anyone other than originally specified without the written consent Alletra GmbH.		Werkstoff (MATERIAL):		Gewicht (WEIGHT):		Toleranz (TOLERANCE):		DIN EN ISO 13920-C (welding ASSY)	
		Oberfläche (SURFACE):		Maßstab (SCALE):		Format. (FORM)		PAGE NO	
Cleaned UHV- Compatible		1.5:1		A4		1		1	
Rauheit (ROUGHNESS)		√		Benennung (DESCRIPTION):					
00 first origin		DATE		NAME		1 off SMPD f/t, double sided, smooth bore on flange DN16 CF			
Design 23.08.2024 AD		Drawn 17.09.2024 AD		Check 17.09.2024 JB		Approv 17.09.2024 AD		Zeich. Nr. (Drw. No.):	
REV Beschreibung (CHANGING)		gesp. am (SAVE DAT.): 17.09.2024		Art. Nr. (PART NO.) 242-SMPD-SD-C16		242-SMPD-SD-C16		REV 00	