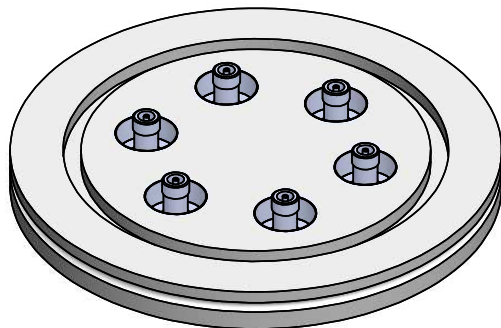
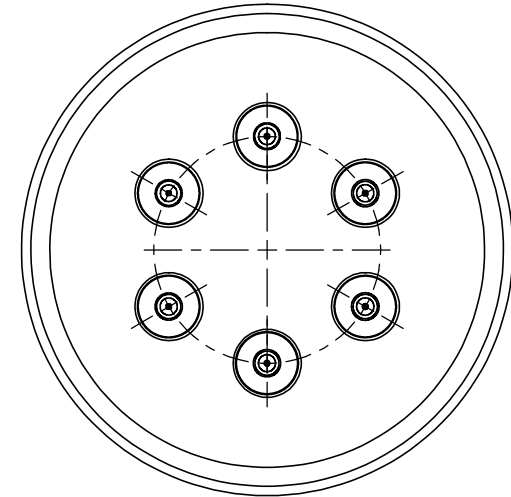
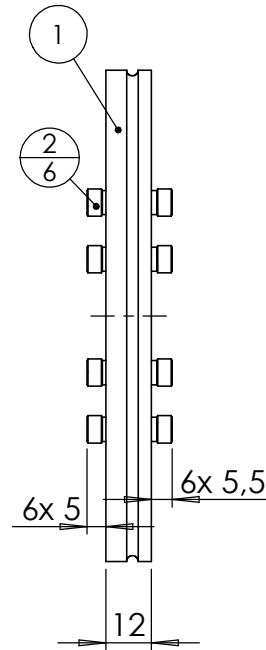
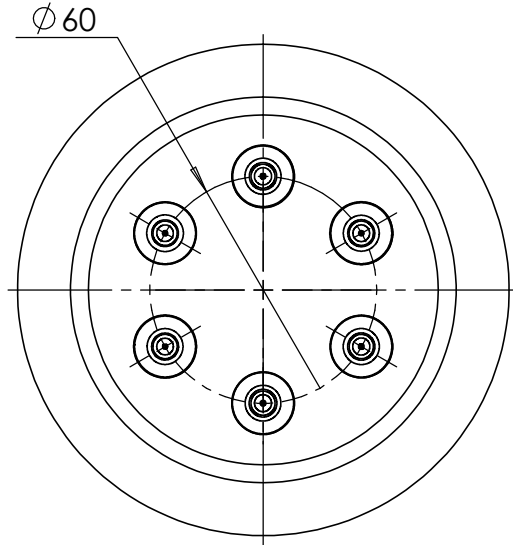


POS-NR.	DESCRIPTION	MATERIAL	QTY
1	modified flange DN100 ISO-K	1.4301 (304)	1
2	SMA f/t double sided floating shield 50 Ohm	SS / ceramic	6



Bemerkungen (Remarks)				Freimaßtoleranz (Standard Toleranz)		Maßstab (Scale)		Rauheit (Roughness)		europ.Projektion	
All informations provided in this drawing is considered to be confidential, proprietary and secret information. It is intended only for the use of individual or entity to whom it is sent. Individual or entity agrees to not disseminate or copy this information to anyone other than originally specified without the written consent Alletra GmbH.				Datum		Name		Material, Standard Oberfläche (Treatment)		Kanten (edges)	
Design				15.03.2021		AD		6 off SMADF50 f/t on flange DN100 ISO-K		1041.78	
Drawn				15.,3.2021		AD				Page: 1	
Check										Pages: 1	
								Zeichnungsnummer (Drawing No.)		Revision	
								242-SMADF50-ISO100-6			
Index				Modification		Datum		Datei (File)		Format A4	
								C:\PDM-Store\I:\PDM-Store\			