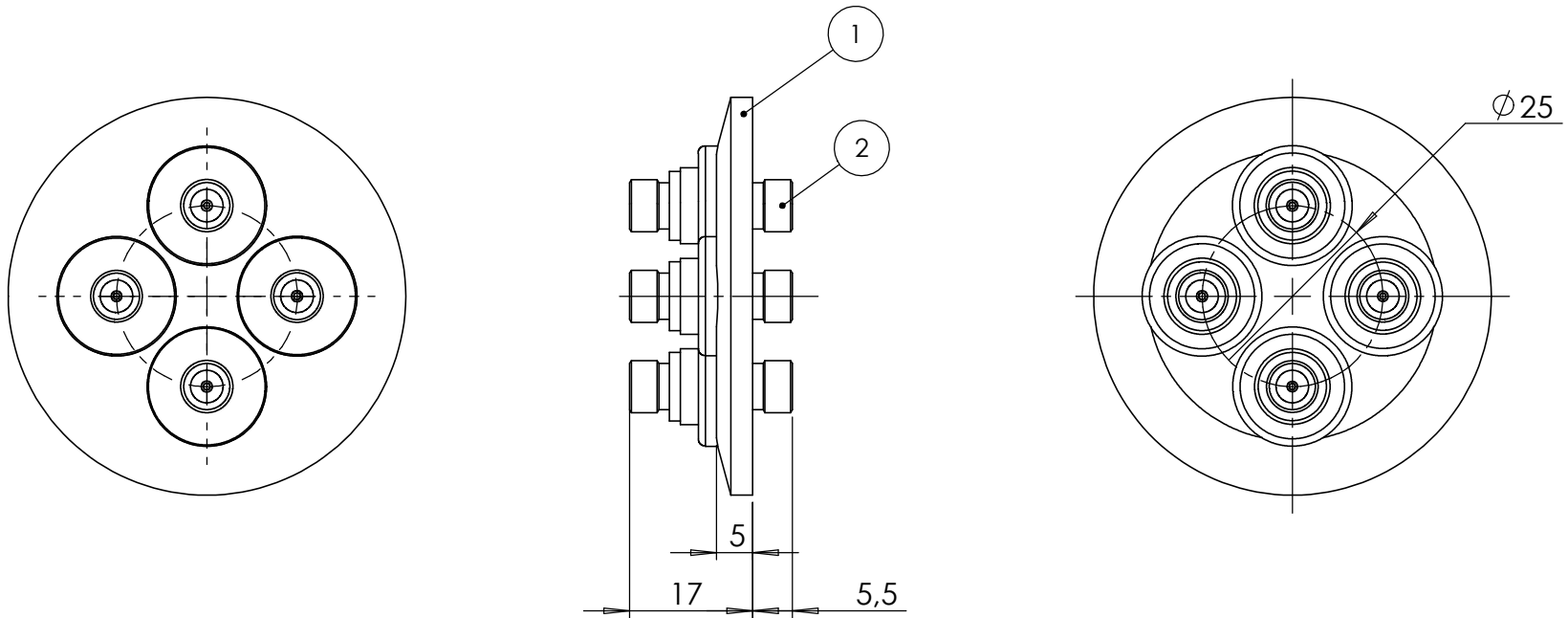
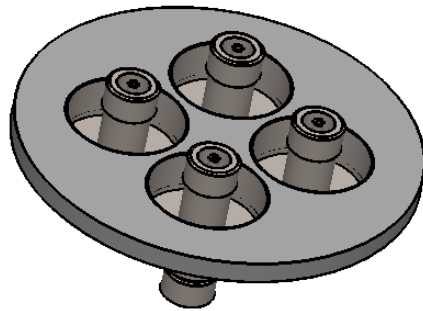


POS-NR.	DESCRIPTION	MATERIAL	QTY
1	modified flange DN40 KF	1.4301 (304)	1
2	SMA F/T double sided grounded shield 50 Ohm	Stainless Steel	4



This flange can only be used with outer centering ring



Bemerkungen (Remarks)				Freimaßtoleranz (Standard Toleranz)	Maßstab (Scale)	Rauheit (Roughness)	europ.Projektion
All informations provided in this drawing is considered to be confidential, proprietary and secret information. It is intended only for the use of individual or entity to whom it is sent. Individual or entity agrees to not disseminate or copy this information to anyone other than originally specified without the written consent Alletra GmbH.					1:1		
		Datum	Name	Material, Standard Oberfläche (Treatment) <b>Bezeichnung (Title)</b> <b>4 of SMAD50 f/t on flange DN40 KF</b>			Kanten (edges) 
	Design	11.02.2016	FW				
	Drawn	11.02.2016	FW				Page: <b>1</b> / Pages: <b>1</b>
	Check			<b>Zeichnungsnummer (Drawing No.)</b> <b>242-SMAD50-K40-4</b>			Revision
Index	Modification	Datum	Name	Datei (File) C:\PDMStore\C\PDMStore\			Format <b>A4</b>