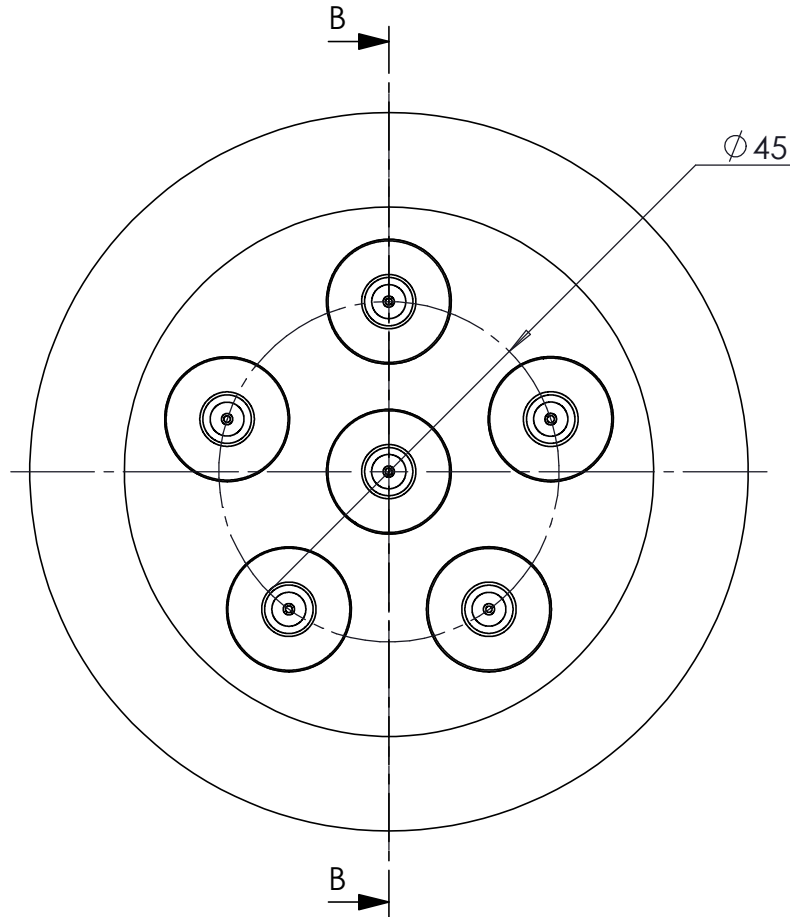
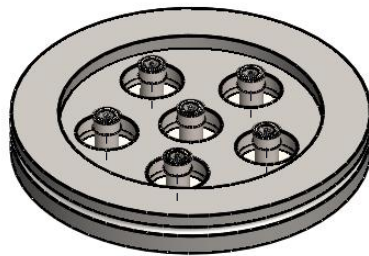
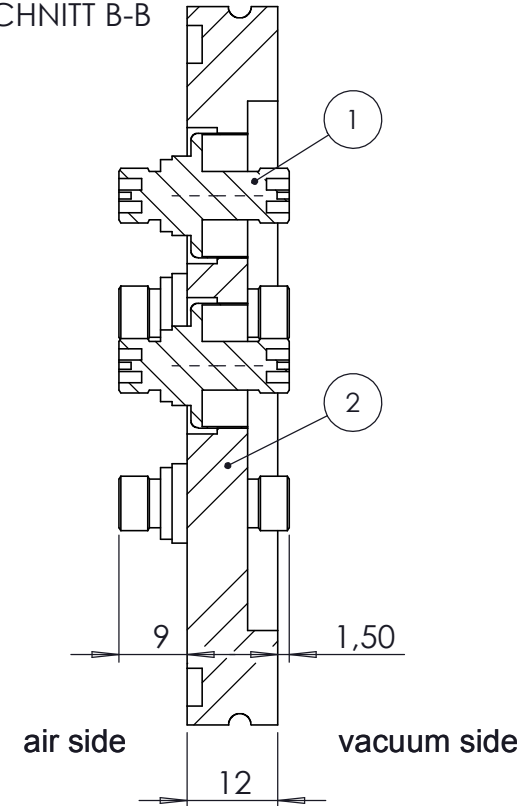


POS-NR.	DESCRIPTION	MATERIAL	QTY
1	SMA f/t double sided grounded shield 50 Ohm	Stainless Steel	6
2	modified flange DN63 ISO-K	1.4301 (X5CrNi18-10)	1



SCHNITT B-B



Bemerkungen (Remarks)				Freimaßtoleranz (Standard Toleranz)		Maßstab (Scale)		Rauheit (Roughness)		europ. Projektion	
All informations provided in this drawing is considered to be confidential, proprietary and secret information. It is intended only for the use of individual or entity to whom it is sent. Individual or entity agrees to not disseminate or copy this information to anyone other than originally specified without the written consent Allectra GmbH.				Datum		Name					
				Design 10.01.2017		NH					
				Drawn 12.01.2017		NH		Material, Standard Oberfläche (Treatment)		Kanten (edges)	
				Check				Bezeichnung (Title)			
								4 of SMAD50 f/t		Gewicht (weight) g	
								on flange DN63 ISO-K		490.03	
								Zeichnungsnummer (Drawing No.)		Page: Pages:	
								242-SMAD50-ISO63-6		1 1	
								Datei (File)		Revision	
								c:\PDMStore-NH\C:\PDMStore-NH\		Format A4	
Index	Modification	Datum	Name								

