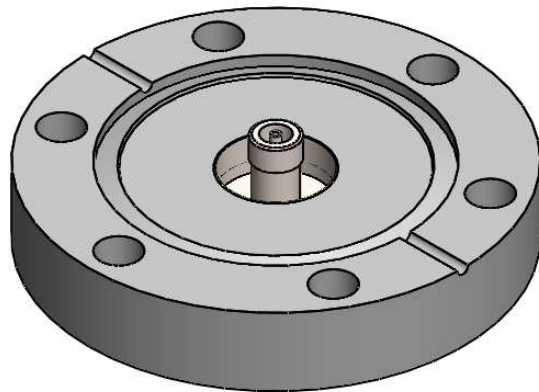
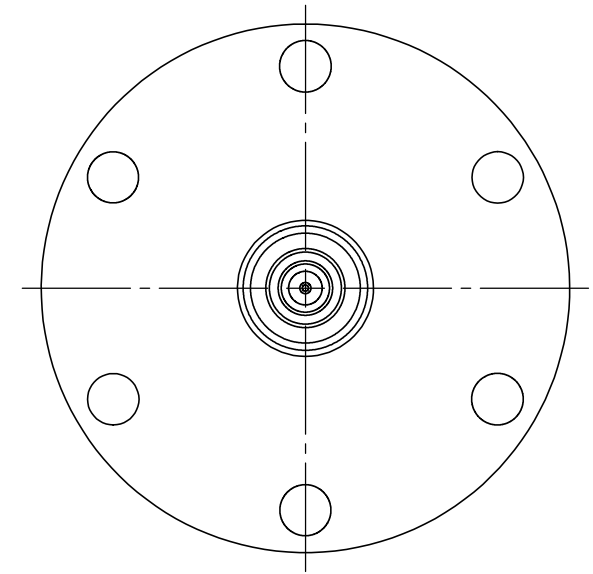
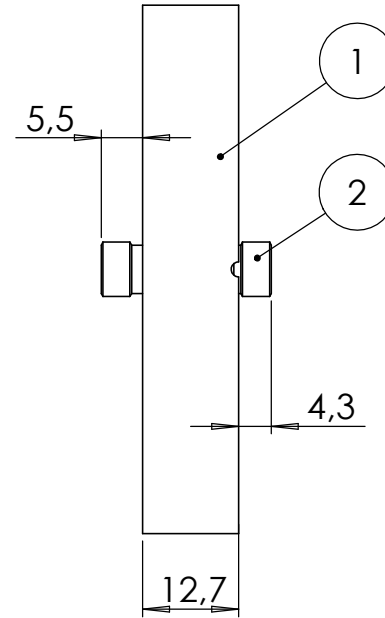
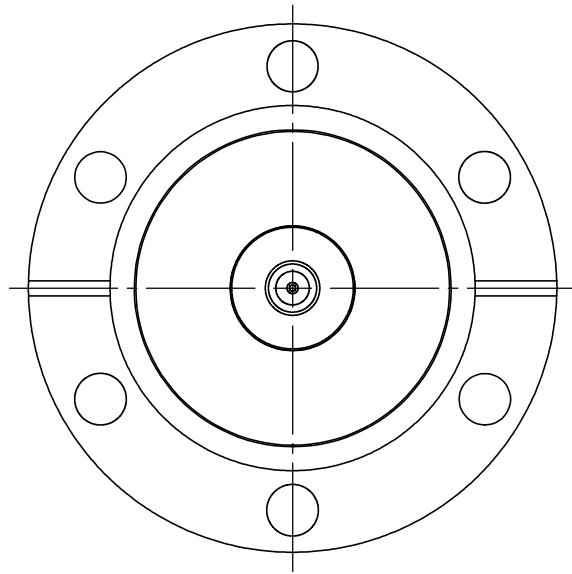



| POS-NR. | DESCRIPTION | MATERIAL | QTY |
|---------|---|-----------------|-----|
| 1 | modified flange DN40 CF | 1.4404 | 1 |
| 2 | SMA F/T double sided grounded shield 50 Ohm | Stainless Steel | 1 |



| Bemerkungen (Remarks) | | | | Freimaßtoleranz (Standard Toleranz) | | Maßstab (Scale) | Rauheit (Roughness) | europ.Projektion | | | | |
|--|--|--|--|-------------------------------------|--|-----------------|---|---|----------------|--------------------------------------|--|------------------|
| All informations provided in this drawing is considered to be confidential, proprietary and secret information. It is intended only for the use of individual or entity to whom it is sent. Individual or entity agrees to not disseminate or copy this information to anyone other than originally specified without the written consent Allectra GmbH. | | | | Datum | | Name | Material, Standard Oberfläche (Treatment) |  Kanten (edges) | | | | |
| | | | | | | | | | | Design 08.02.2016 | | JB |
| | | | | Drawn 08.02.2016 | | JB | Bezeichnung (Title) 1 of SMAD50 f/t on flange DN40 CF | | 337.30 | | | |
| | | | | Check | | | | | Page: 1 | Pages: 1 | | |
| | | | | | | | Zeichnungsnummer (Drawing No.) 242-SMAD50-C40 | | Revision | | | |
| Index | | | | Modification | | Datum | | Name | | Datei (File) C:\PDMStore\C\PDMStore\ | | Format A4 |

