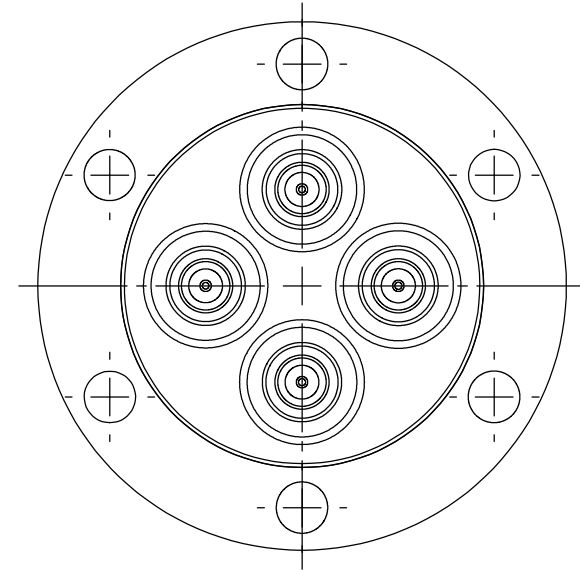
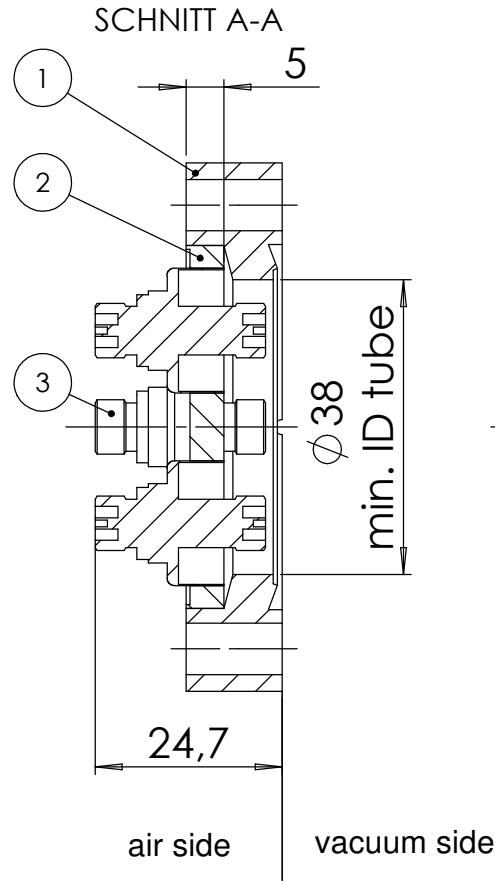
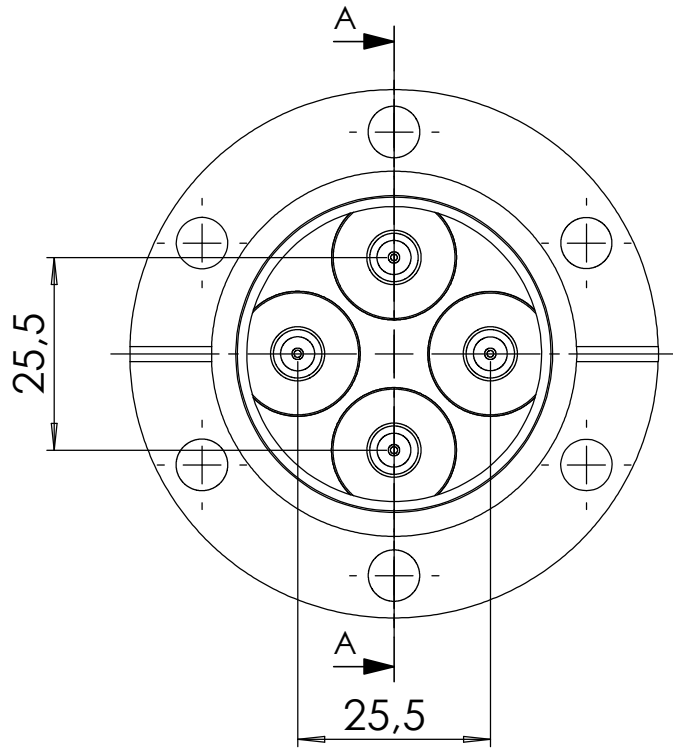
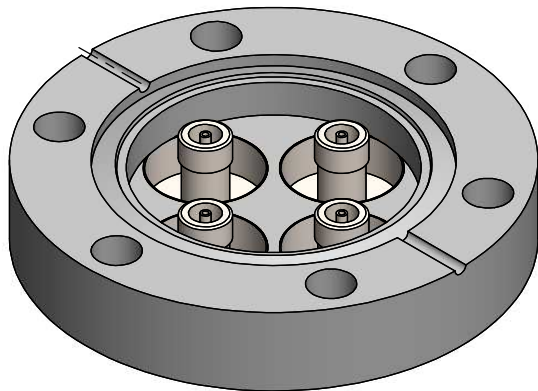


POS-NR.	DESCRIPTION	MATERIAL	QTY
1	special flange DN40 CF	1.4404	1
2	plate 4 of 16,5mm holes	1.4404 (316L)	1
3	SMA f/t double sided grounded shield 50 Ohm	Stainless Steel	4



Please use screws DIN 912 M6x35 are including



Bemerkungen (Remarks)				Freimaßtoleranz (Standard Toleranz)		Maßstab (Scale)	Rauheit (Roughness)	europ.Projektion	
All informations provided in this drawing is considered to be confidential, proprietary and secret information. It is intended only for the use of individual or entity to whom it is sent. Individual or entity agrees to not disseminate or copy this information to anyone other than originally specified without the written consent Allectra GmbH.				Datum		1:1			
				Name				Material, Standard Oberfläche (Treatment)	
				Design	03.09.2019	AD	Bezeichnung (Title)		Gewicht (weight)
				Drawn	03.09.2019	AD	4x SMAD50 f/t on flange DN40 CF		285.59
				Check					Page:
							Zeichnungsnummer (Drawing No.)		Revision
							242-SMAD50-C40-4		1
Index	Modification	Datum	Name	Datei (File)			C:\PDMStore\C:\PDMStore\		Format A4