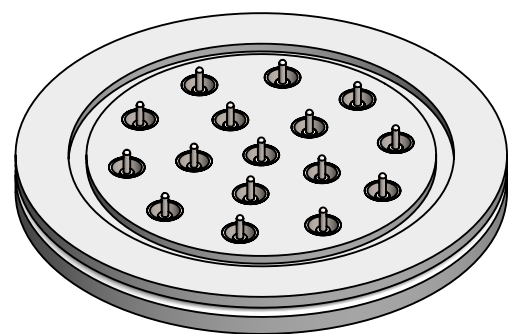
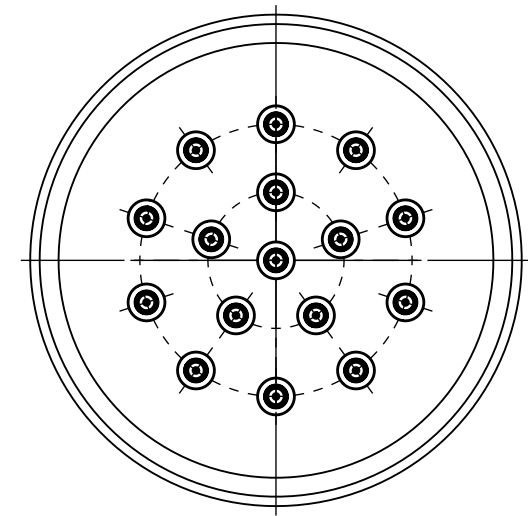
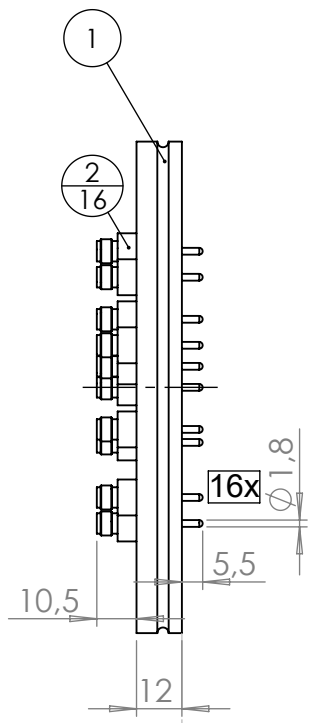
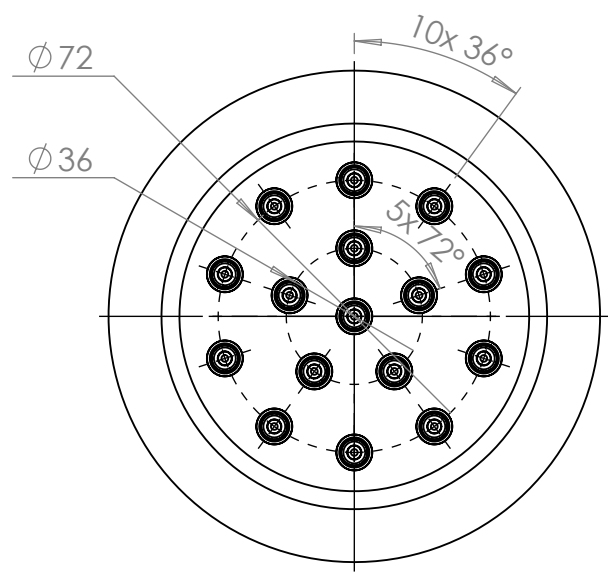


POS. NO.	DESCRIPTION	MATERIAL	QTY
1	modified flange DN100 ISO-K	1.4301 (304)	1
2	coaxial f/t type SMA, 50 Ohm, 1KV, 3A, weldable	stainless steel	16



air side vacuum side

<1 E-9 mbar*/l/sec, He, according to DIN EN 1779-A3
Definition Leckprüfung (definon leak check)

Zeichnung Nutzung (SCOPE OF DRAWING) Drawing external usage for customer		Prüfung Zubehör. (CON + HSG CHECK)		Bemerkung (REMARKS)		Kanten (EDGES)		PROJECTION		
All informations provided in this drawing is considered to be confidential, proprietary and secret information. It is intended only for the use of individual or entity to whom it is sent. Individual or entity agrees to not disseminate or copy this information to anyone other than originally specified without the written consent Allectra GmbH.		Werkstoff (MATERIAL): Gewicht (WEIGHT):		Toleranz (TOLERANCE) DIN EN ISO 13920-C (welding ASSY)						
		Oberfläche (SURFACE) Cleaned UHV- Compatible								g
name Allectra standard		DATE	NAME	Maßstab (SCALE):	Format. (FORM)	PAGE NO	PAGES	Rauheit (ROUGHNESS)	Benennung (DESCRIPTION): 16 off SMA50 f/t on flange DN100 ISO-K	
(drw/doc/sketch)		Design	AD	1:2	A4	1	1			
date		Drawn	AD	Zeich. Nr. (Drw. No.): 242-SMA50-ISO100-16						
00 first origin		Check	AD							REV 00
REV Beschreibung (CHANGING)		Approv	AD	Art. Nr. (PART NO.) 242-SMA50-ISO100-16						
				gesp. am (SAVE DAT.): 12.09.2024						