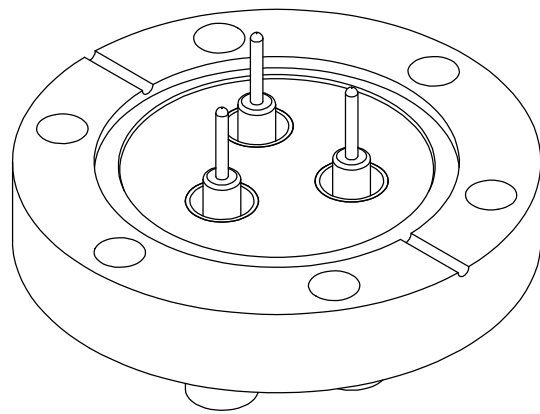
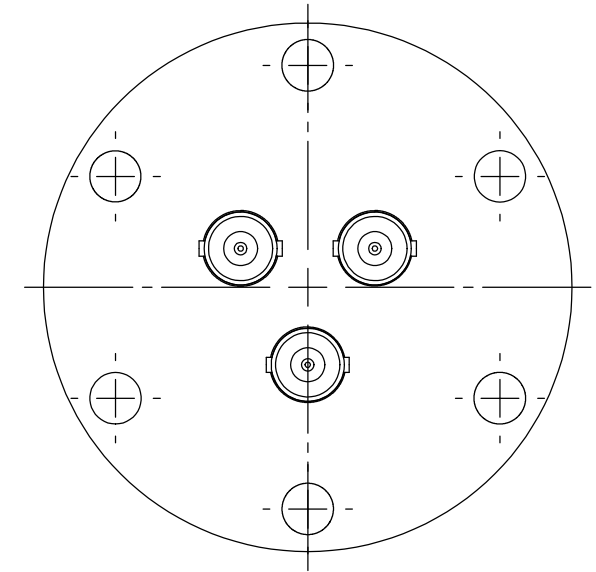
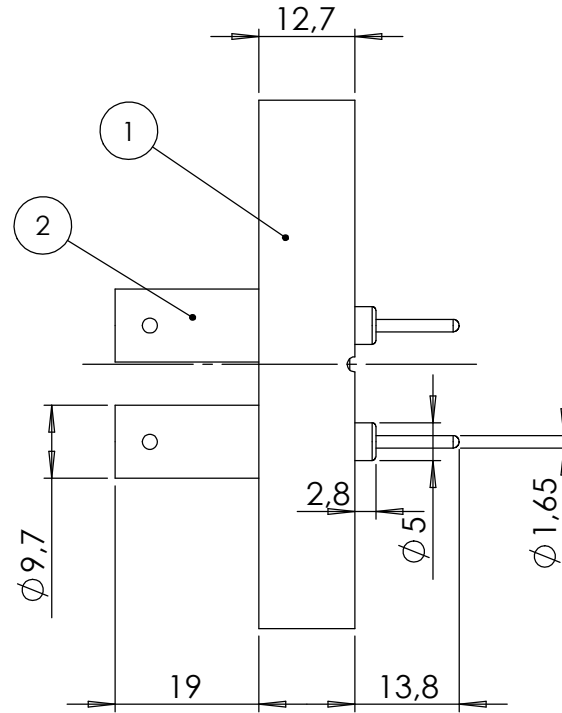
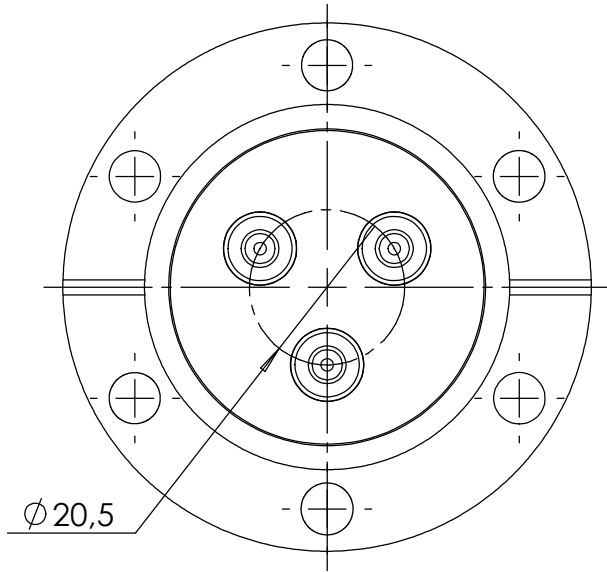


POS-NR.	DESCRIPTION	MATERIAL	QTY
1	modified flange DN40 CF	1.4404 (316L)	1
2	SHV f/t, 50 Ohm type	Stainless Steel	3



Bemerkungen (Remarks)				Freimaßtoleranz (Standard Toleranz)		Maßstab (Scale)		Rauheit (Roughness)		europ.Projektion			
All informations provided in this drawing is considered to be confidential, proprietary and secret information. It is intended only for the use of individual or entity to whom it is sent. Individual or entity agrees to not disseminate or copy this information to anyone other than originally specified without the written consent Allectra GmbH.				Datum		Name		Material, Standard Oberfläche (Treatment)		Kanten (edges)			
												Gewicht (weight)	
Design				19.02.2018		JB		Bezeichnung (Title)		3 of SHV50			
Drawn				19.02.2018		FW				Gewicht (weight)		359.10	
Check										Page:		1	
										Pages:		1	
										Revision			
										Format		A4	
Index				Modification		Datum		Name		Datei (File)		C:\PDMStore\C:\PDMStore\	



Zeichnungsnummer (Drawing No.)
242-SHV50-C40-3