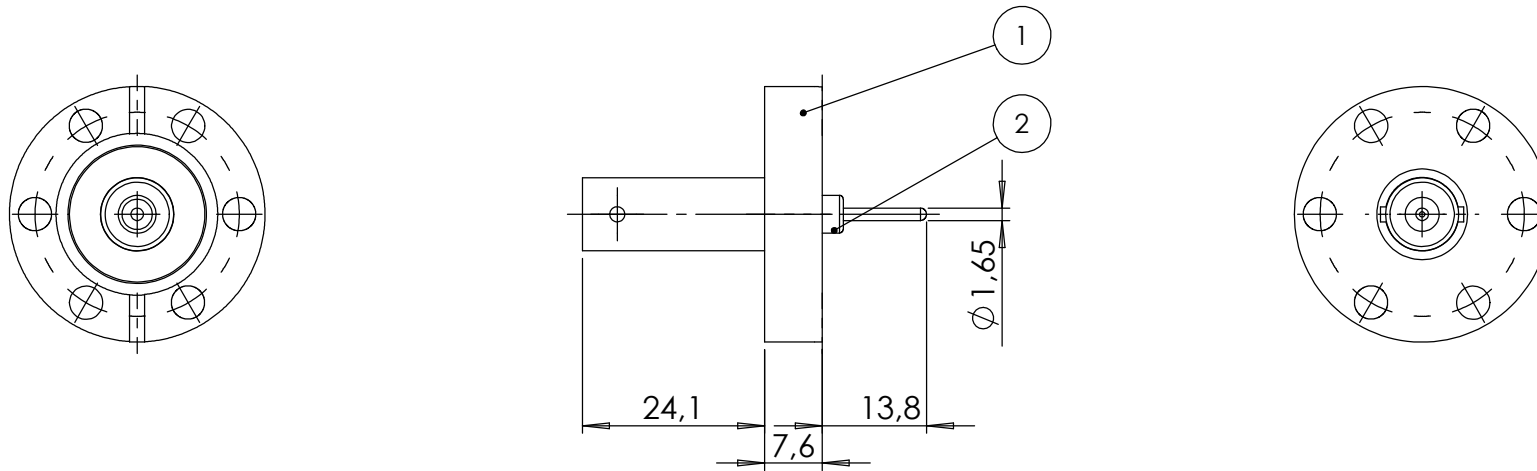
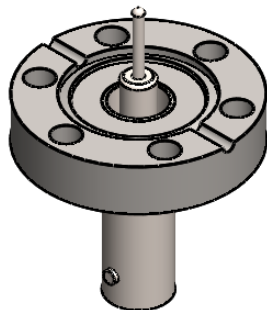


POS-NR.	DESCRIPTION	MATERIAL	QTY
1	modified flange DN16 CF	1.4404	1
2	SHV F/T, 50 Ohm type	Stainless Steel	1



including air-side connector



Bemerkungen (Remarks)				Freimaßtoleranz (Standard Toleranz)	Maßstab (Scale)	Rauheit (Roughness)	europ.Projektion
All informations provided in this drawing is considered to be confidential, proprietary and secret information. If is intended only for the use of individual or entity to whom it is sent. Individual or entity agrees to not disseminate or copy this information to anyone other than originally specified without the written consent Allectra GmbH.					1:1		
				Design	09.12.2013	FW	Gewicht (weight) g 51.26
				Drawn	04.03.2015	FW	
				Check	04.03.2015		
						1 off SHV50 on flange DN16 CF	Page: 1 Pages: 1
							Revision
						Zeichnungsnummer (Drawing No.) 242-SHV50-C16	
Index						Datei (File) C:\PDMStore\IC\PDMStore\	
Modification				Datum		Name	