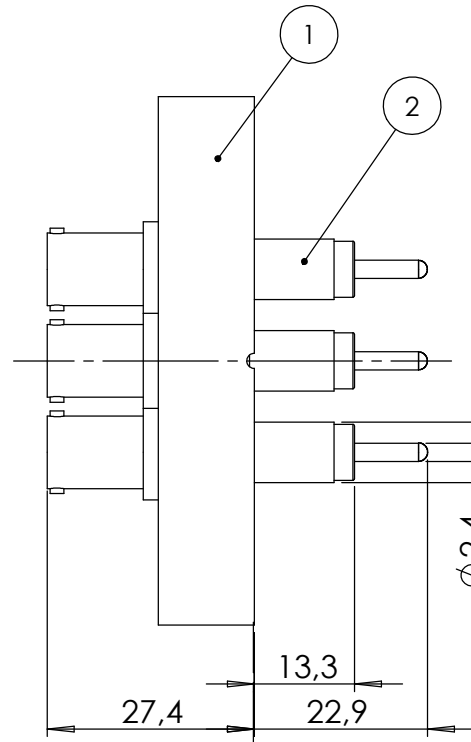
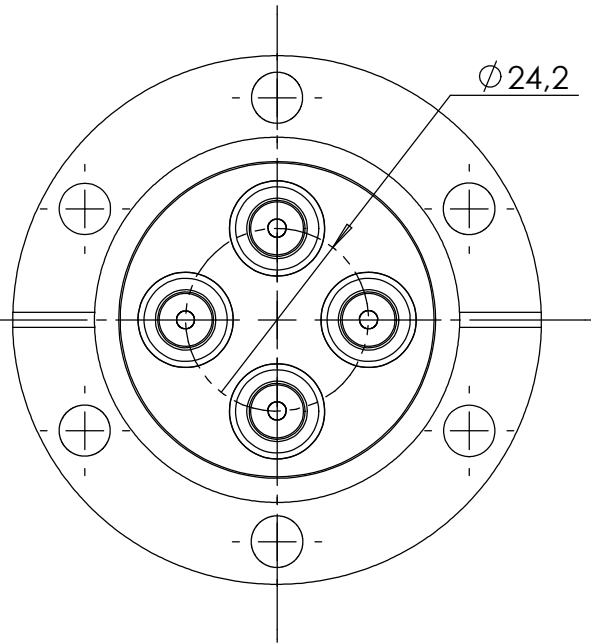
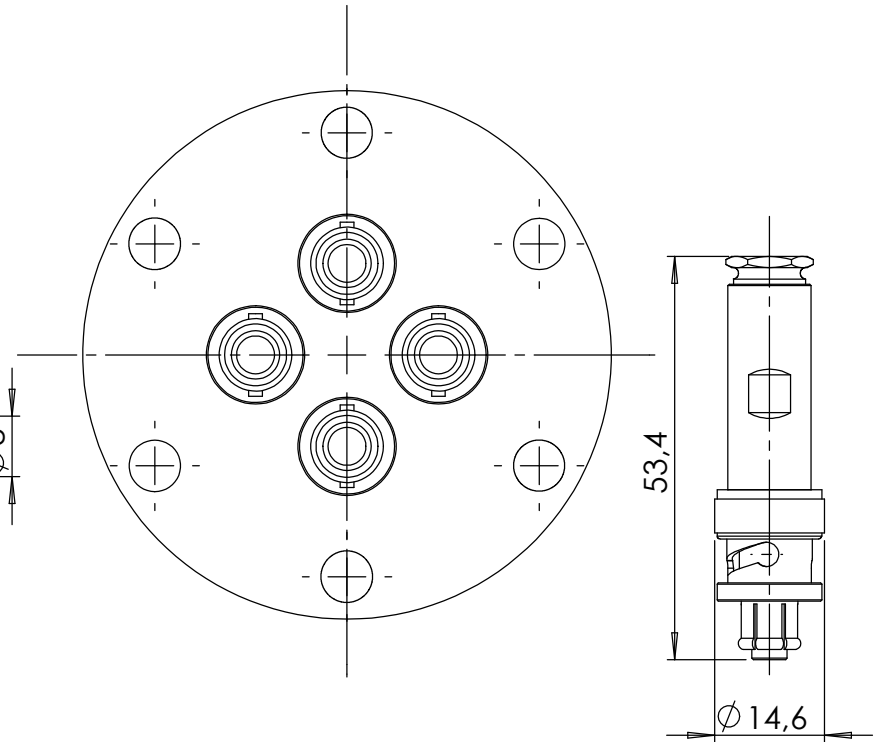


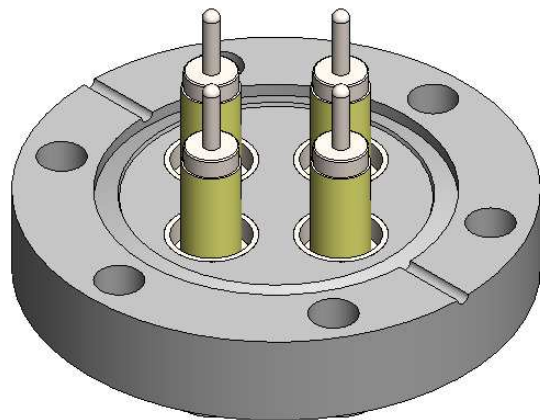
POS-NR.	DESCRIPTION	Material	QTY
1	modified flange DN40 CF	1.4404 (316L)	1
2	coaxial SHV exposed f/t, 5 KV	Stainless Steel	4



air side vacuum side



air side connectors are included



Bemerkungen (Remarks)				Freimaßtoleranz (Standard Toleranz)		Maßstab (Scale)	Rauheit (Roughness)	europ.Projektion			
All informations provided in this drawing is considered to be confidential, proprietary and secret information. If is intended only for the use of individual or entity to whom it is sent. Individual or entity agrees to not disseminate or copy this information to anyone other than originally specified without the written consent Allectra GmbH.				Datum		Name	Material, Standard Oberfläche (Treatment)	Kanten (edges)			
				Design		12.04.2017		FW	Bezeichnung (Title)	Gewicht (weight)	
				Drawn		12.04.2017		FW		390.30	
Check								Page: 1	Pages: 1		
Index				Modification		Datum		Name			
								Revision			
								Format A4			



Zeichnungsnummer
(Drawing No.) **241-SHVE-C40-4**

Datei (File) X:\PDMStore\FW\X:\PDMStore-FW