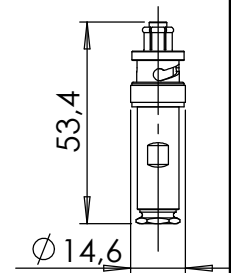
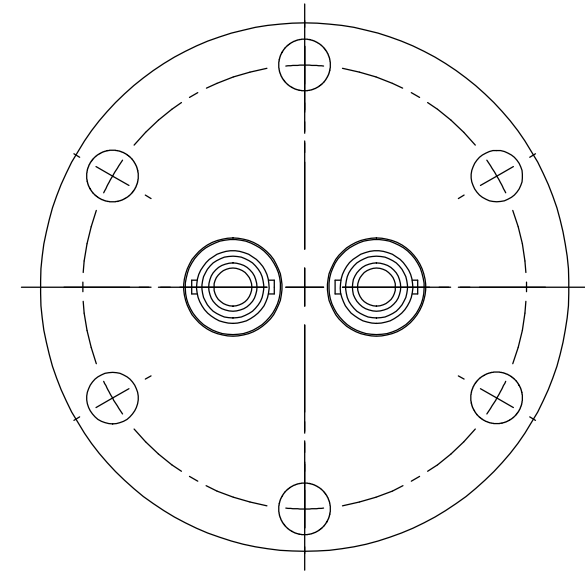
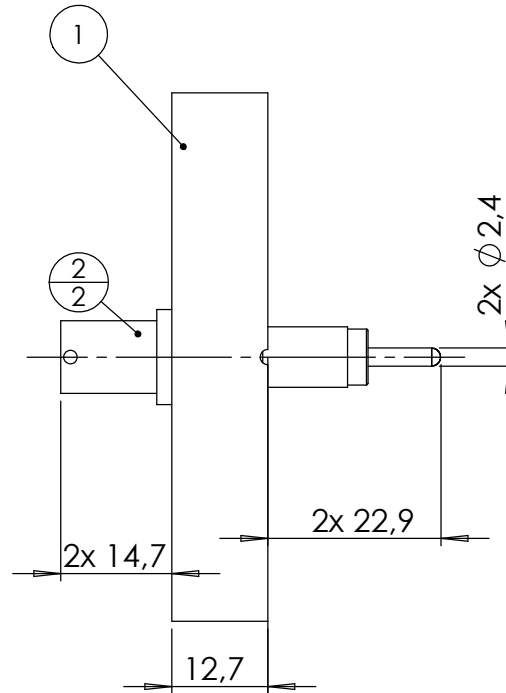
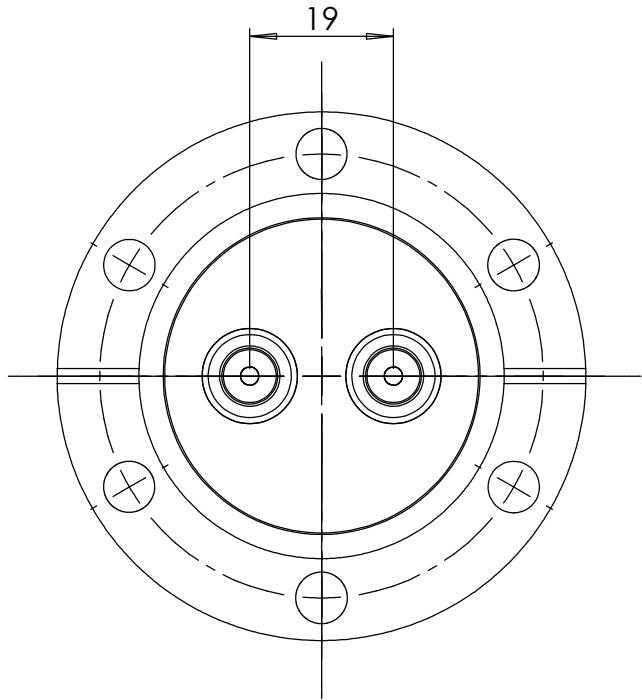
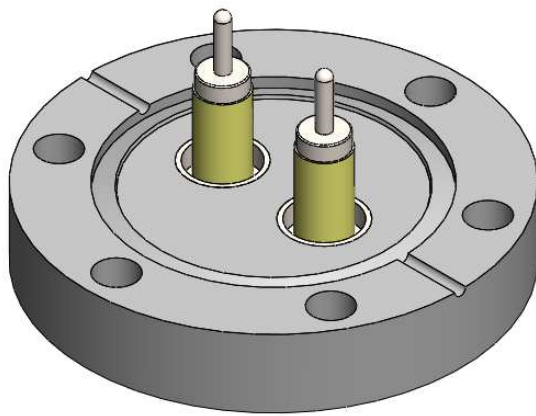


POS-NR.	DESCRIPTION	MATERIAL	QTY
1	2 off 12.6 holes	1.4404 (316L)	1
2	coaxial SHV exposed f/t, 5 KV	Stainless Steel	2



air side vacuum side

air side connectors are included



Bemerkungen (Remarks)				Freimaßtoleranz (Standard Toleranz)		Maßstab (Scale)	Rauheit (Roughness)	europ.Projektion		
All informations provided in this drawing is considered to be confidential, proprietary and secret information. If is intended only for the use of individual or entity to whom it is sent. Individual or entity agrees to not disseminate or copy this information to anyone other than originally specified without the written consent Alletra GmbH.				Datum		1:1				
				Name				Material, Standard Oberfläche (Treatment)	Kanten (edges)	
				Design 14.10.2020 AD						
Drawn 14.10.2020 AD		Bezeichnung (Title)		Gewicht (weight)		g				
Check		2 off SHVE f/t on flange DN40 CF		372.05		Page: 2 Pages: 4				
				Zeichnungsnummer (Drawing No.) 241-SHVE-C40-2				Revision		
				Datei (File) C:\PDM-Store\C:\PDM-Store\				Format A4		
Index	Modification	Datum	Name							