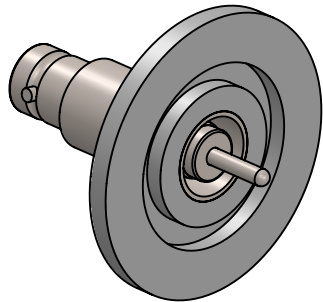
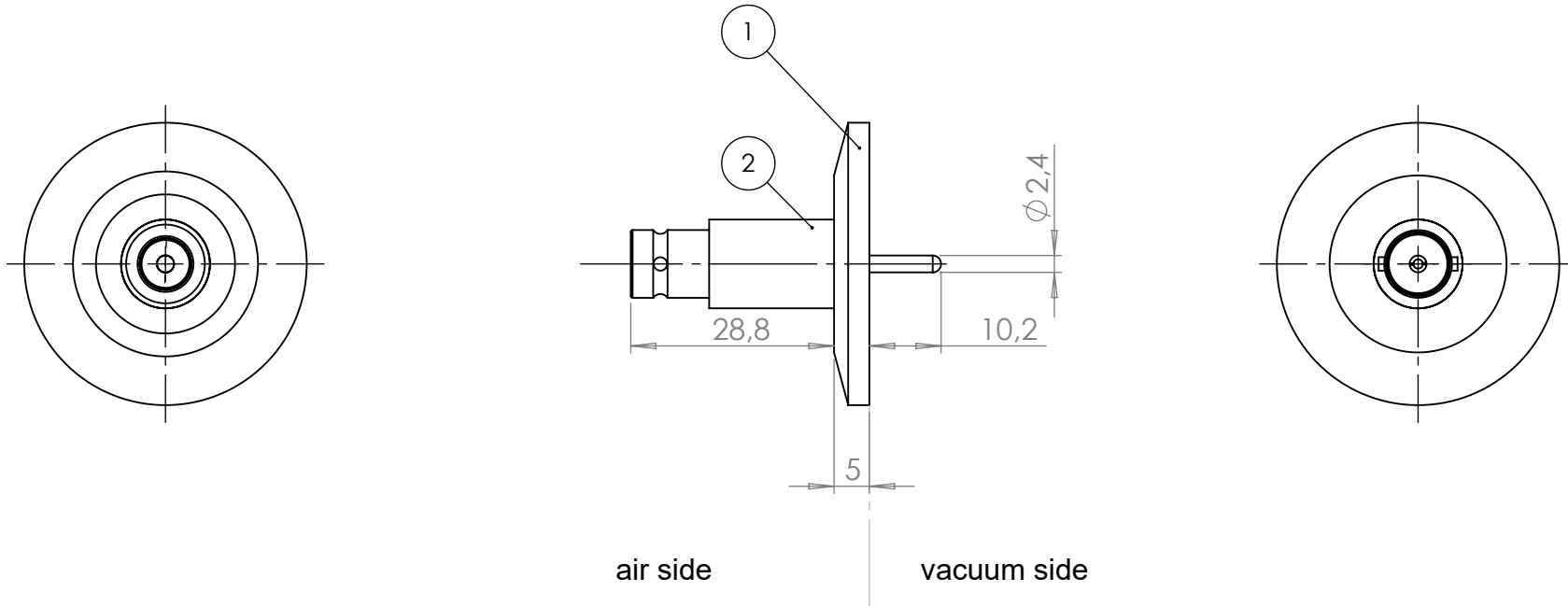


| POS. | DESCRIPTION   | MATERIAL        | QTY |
|------|---|-----------------|-----|
| 1    | modified flange DN25 KF                                   | 1.4301 (304)    | 1   |
| 2    | coaxial f/t type BNC, 500V, 3A, grounded shield, weldable | Stainless Steel | 1   |



air side connector included

<1x10 E-9 mbar\*/sec, according DIN EN 1779  
Definition Leckprüfung (definiton leak check)

|   |                         |   |  |  |                          |                        |  |            |  |
|---|-------------------------|---|--|--|--------------------------|------------------------|--|------------|--|
| Zeichnung Nutzung (using drawing)<br>Drawing external use for customer  |                         | Verwendetes Material (USED MATERIAL)            |  | Bemerkung (REMARKS)                                  |                          | Kanten (EDGES)         |  | PROJECTION |  |
| All informations provided in this drawing is considered to be confidential, proprietary and secret information. It is intended only for the use of individual or entity to whom it is sent. Individually or entity agrees to not disseminate or copy this information to anyone other than originally specified without the written consent Alletra GmbH. |                         | Werkstoff (MATERIAL): Gewicht (WIGHT):          |  | Toleranz (TOLERANCE)<br>DIN EN 1390-C (welding ASSY) |                          |                        |  |            |  |
|   |                         | Oberfläche (SURFACE)<br>Cleaned UHV- Compatible |  |  |                          |                        |  |            |  |
| origin  | name                    | Alletra standard                                |  | DATE   | Benennung (DESCRIPTION): |                        |  |            |  |
|   | (drw/doc/sketch)        |   |  | Design   | 17.01.2024               | 1 off BNC f/t          |  |            |  |
|   | date                    |   |  | Drawn  | 17.01.2024               | on flange DN25 KF      |  |            |  |
|   |                         |   |  | Check  | 17.01.2024               |                        |  |            |  |
| 00  | first origin            |   |  | Approv   | 17.01.2024               | Zeich. Nr. (Drw. No.): |  |            |  |
|   |                         |   |  | 241-BNC-K25  |                          |                        |  | REV        |  |
|   |                         |   |  |  |                          |                        |  | 00         |  |
| REV   | Beschreibung (CHANGING) | gesp. am (SAVE DAT.): 17.01.2024                |  | Art. Nr. (PART NO.) 241-BNC-K25                      |                          |                        |  |            |  |