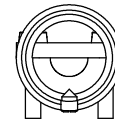
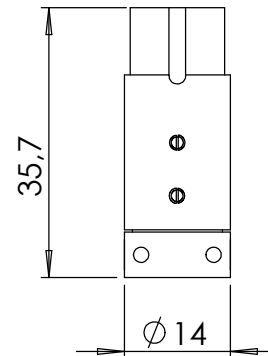
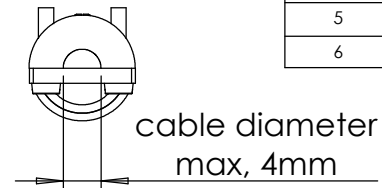
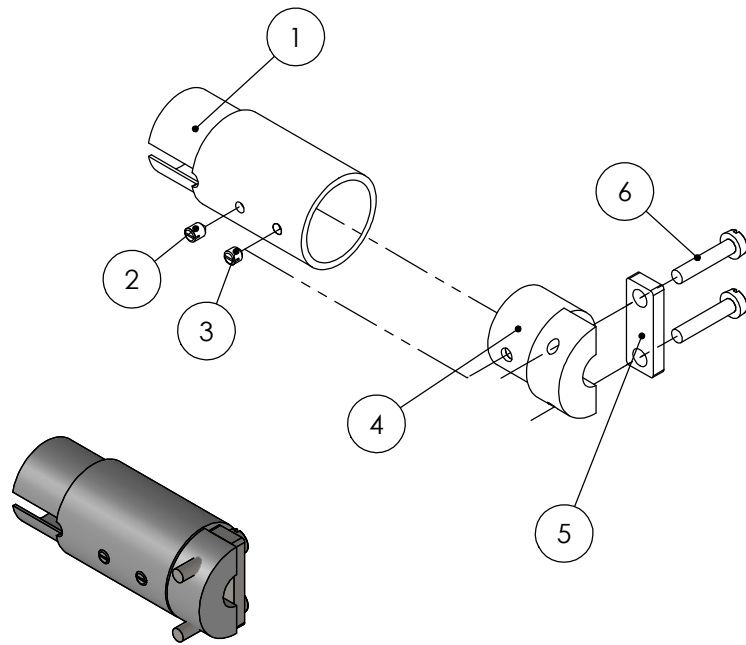


POS-NR.	DESCRIPTION	MATERIAL	QTY
1	housing for 6 pin SR connector	1.4404 (316L)	1
2	GRUB SCREW M2X3	Stainless Steel	1
3	GRUB SCREW-M2X2-551	Stainless Steel	1
4	shield clamp part	1.4404 (316L)	1
5	clamp for SR housing	1.4571 (X6CrNiMoTi17-12-2)	1
6		Stainless Steel	2



Bemerkungen (Remarks)				Freimaßtoleranz (Standard Toleranz)		Maßstab (Scale)	Rauheit (Rougness)	europ.Projektion	
All informations provided in this drawing is considered to be confidential, proprietary and secret information. It is intended only for the use of individual or entity to whom it is sent. Individual or entity agrees to not disseminate or copy this information to anyone other than originally specified without the written consent Allectra GmbH.				Datum		1:1	Material, Standard Oberfläche (Treatment)	Kanten (edges)	
									Name
				Design	10.04.2019	AD	SR housing for CM 6	Gewicht (weight)	g
				Drawn	10.04.2019	AD		15.23	
				Check				Page: 1	Pages: 1
						Zeichnungsnummer (Drawing No.)		Revision	
						220-SR6			
Index	Modification	Datum	Name			Datei (File) C:\PDMStore\C:\PDMStore\		Format A4	