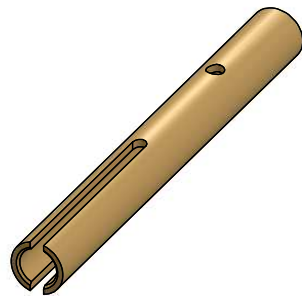
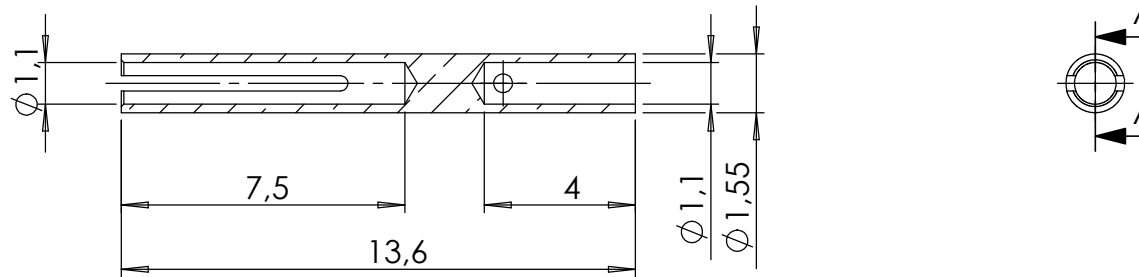


SECTION A-A



Bemerkungen (Remarks)				Freimaßtoleranz (Standard Toleranz)		Maßstab (Scale)	Rauheit (Roughness)	europ.Projektion	
All informations provided in this drawing is considered to be confidential, proprietary and secret information. If is intended only for the use of individual or entity to whom it is sent. Individual or entity agrees to not disseminate or copy this information to anyone other than originally specified without the written consent Allectra GmbH.				DIN ISO 2768 f-H		5:1	$\sqrt{Rz\ 16\ (Rz\ 6.3)}$		
				Material, Standard		2.1247 (CuBe2) gold plated		Kanten (edges)	
				Datum	Name	Bezeichnung (Title)		Gewicht (weight)	
				Design	03.09.2015	FW	crimp contact female for circular miniature connector		g
				Drawn	11.12.2020	AD			0.11
				Check					Page: 2 Pages: 2
						Zeichnungsnummer (Drawing No.)		Revision	
						220-PINF			
Index	Modification	Datum	Name	Datei (File)		C:\PDM-Store\I\C\PDM-Store\		Format A4	