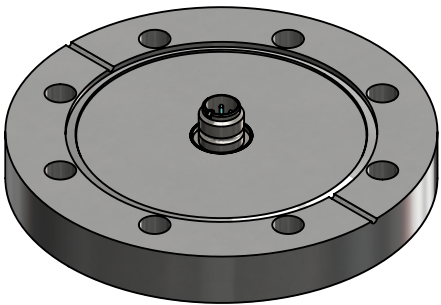
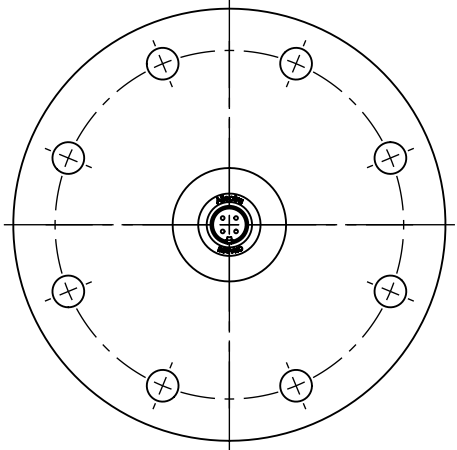
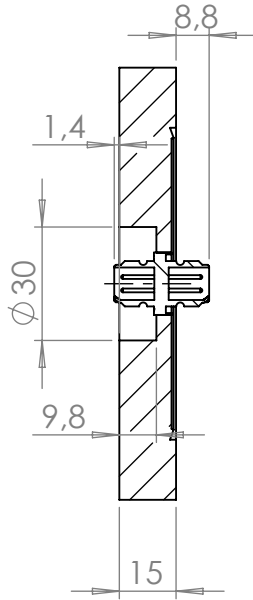
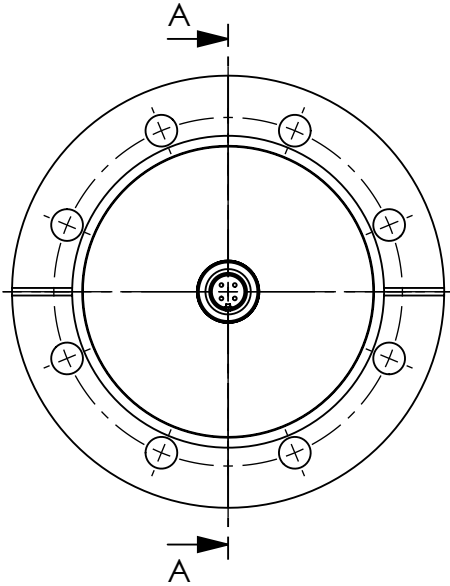


POS. NO.	DESCRIPTION	MATERIAL	QTY
1	modified flange DN63 CF	1.4404 (316L)	1
2	4 pin M12x4 feedthrough	Stainless Steel	1

SECTION A-A



<1 E-10 mbar*/sec, He, according to DIN EN 1779-A3
Definition Leckprüfung (definon leak check)

Zeichnung Nutzung (SCOPE OF DRAWING) Drawing external usage for customer		Prüfung Zubehör. (CON + HSG CHECK)		Bemerkung (REMARKS)		Kanten (EDGES)		PROJECTION		
All informations provided in this drawing is considered to be confidential, proprietary and secret information. It is intended only for the use of individual or entity to whom it is sent. Individidual or entity agrees to not disseminate or copy this information to anyone other than originally specified without the written consent Allectra GmbH.		Werkstoff (MATERIAL): Gewicht (WEIGHT):		Toleranz (TOLERANCE) DIN EN ISO 13920-C (welding ASSY)						
		Oberfläche (SURFACE) Cleaned UHV- Compatible								Maßstab (SCALE): 1:2
origin	name	Allectra standard		DATE	NAME	Benennung (DESCRIPTION): 1 off M12X4 f/t on flange DN63 CF				
	(drw/doc/sketch)			Design	18.07.2024					AD
	date			Drawn	18.07.2024					AD
				Check	18.07.2024					JB
00	first origin			Approv	18.07.2024	AD	Zeich. Nr. (Drw. No.): 220-M12X4-C63		REV 00	
REV Beschreibung (CHANGING)		gesp. am (SAVE DAT.): 18.07.2024		Art. Nr. (PART NO.) 220-M12X4-C63						

