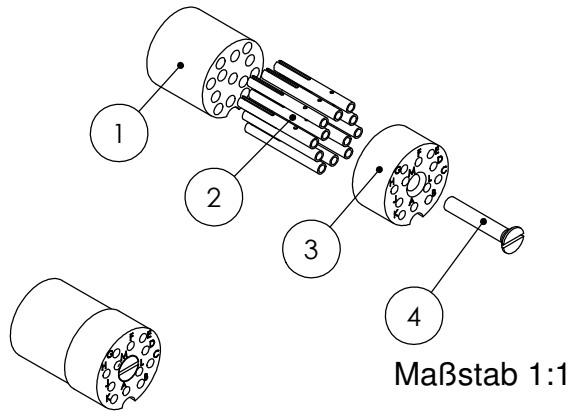
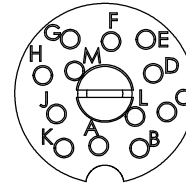
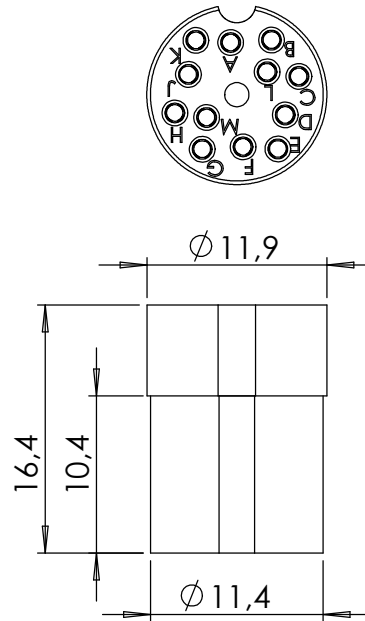


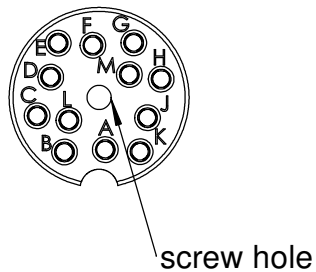
POS-NR.	DESCRIPTION	MATERIAL	QTY
1	front plate 12 pin connector CM type	PEEK (Natur)	1
2	pin female d=1mm	2.1247 (CuBe2) gold plated	12
3	back plate 12 pin connector CM type	PEEK (Natur)	1
4	countersunk screw M2x12 DIN 963	Stainless Steel	1



Maßstab 1:1



view feedthrough M2:1



Bemerkungen (Remarks)				Freimaßtoleranz (Standard Toleranz)		Maßstab (Scale)	Rauheit (Roughness)	europ.Projektion			
All informations provided in this drawing is considered to be confidential, proprietary and secret information. If is intended only for the use of individual or entity to whom it is sent. Individual or entity agrees to not disseminate or copy this information to anyone other than originally specified without the written consent Alletra GmbH.						2:1					
								Material, Standard Oberfläche (Treatment)		Kanten (edges)	
				Datum	Name	connector 12 pol for CM12 feedthrough		Gewicht (weight) g			
				Design	10.04.2019			AD	3.27		
				Drawn	12.04.2019			AD	Page: 1 Pages: 1		
				Check					Revision		
						Zeichnungsnummer (Drawing No.)		220-CON12		Revision	
						Datei (File) C:\PDMStore\C:\PDMStore\		Format A4			
Index	Modification	Datum	Name								