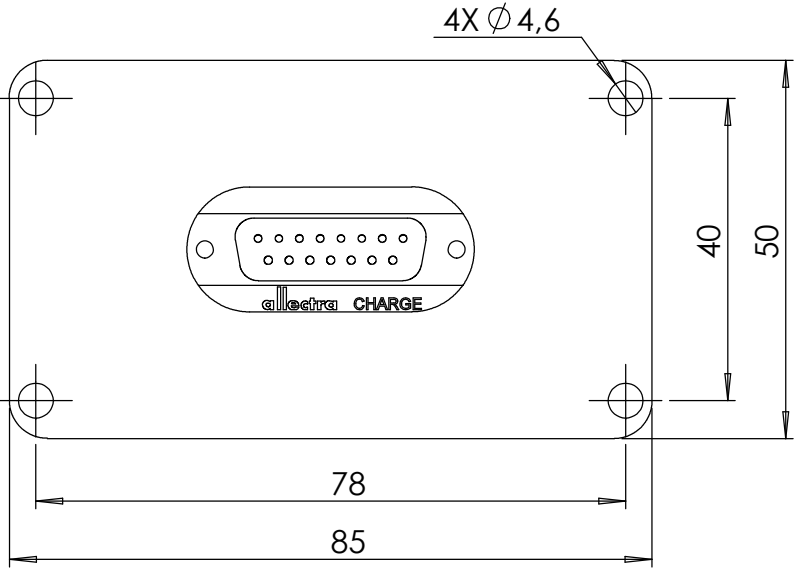
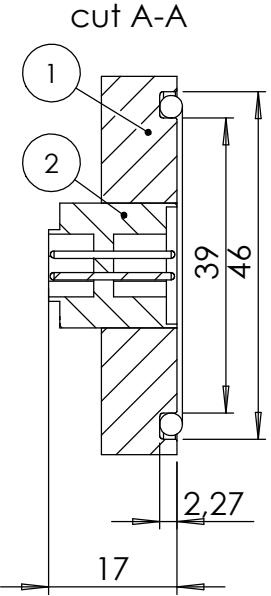
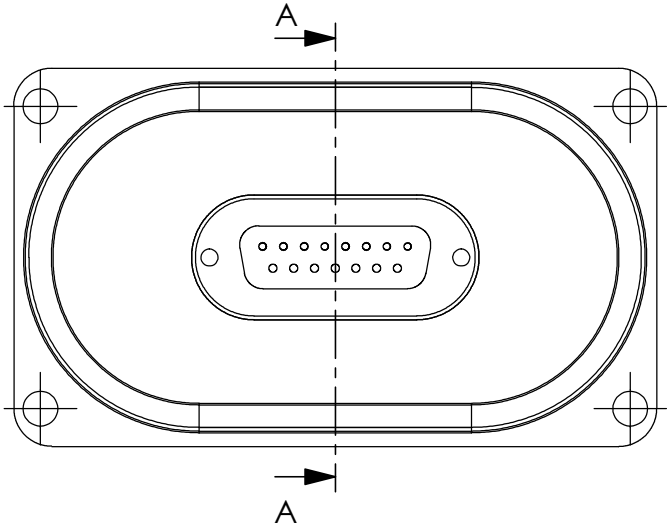
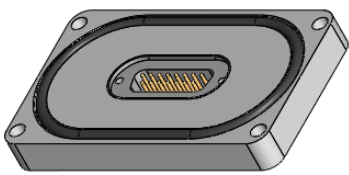


POS-NR.	DESCRIPTION	MATERIAL	QTY
1	flange with slot 15 pin SUB-D	1.4301 (304)	1
2	15 pin SUB-D f/t	Stainless Steel	1



inklusive O-Ring 61X3



Bemerkungen (Remarks)				Freimaßtoleranz (Standard Toleranz)		Maßstab (Scale)	Rauheit (Roughness)	europ.Projektion	
All informations provided in this drawing is considered to be confidential, proprietary and secret information. If is intended only for the use of individual or entity to whom it is sent. Individual or entity agrees to not disseminate or copy this information to anyone other than originally specified without the written consent Allectra GmbH.				Datum		Name	Material, Standard Oberfläche (Treatment)	Kanten (edges)	
				Design		20.03.2019		JB	Gewicht (weight) g
				Drawn		25.06.2019		AD	
Check				Bezeichnung (Title)		base plate f/t SUB-D 15pin		Page: 3	
Index		Modification	Datum	Name	Zeichnungsnummer (Drawing No.)		Revision		
					215-BP-D15				
					Datei (File) C:\PDMStore\C\PDMStore\		Format A4		