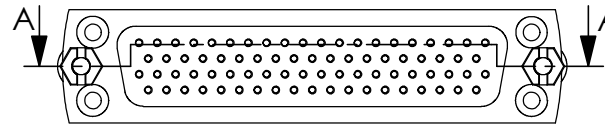
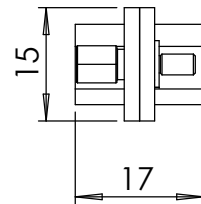
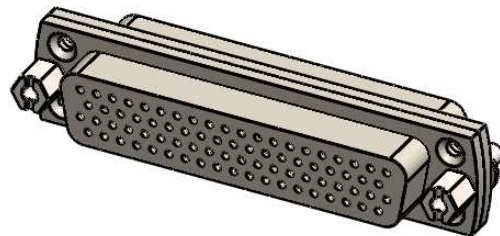
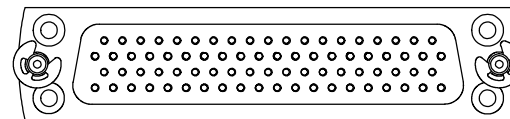
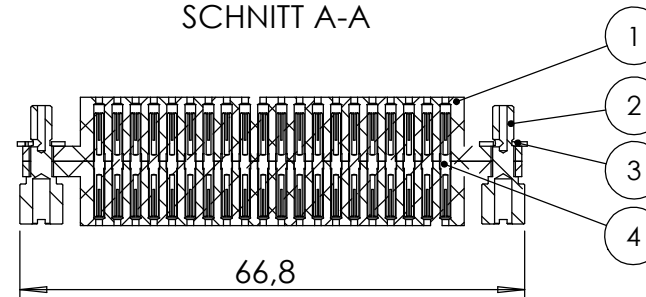


POS-NR.	DESCRIPTION	MATERIAL	QTY
1	Front Plate for SUB-D 78 Pin female	PEEK (Natur)	2
2	SUB-HD screw 4-40 UNC	1.4841 (X15CrNiSi25-21)	2
3	Lock washer D=2,3	Stainless Steel	2
4	female SUB-HD contact	2.1247 (CuBe2) gold plated	78



SCHNITT A-A



Bemerkungen (Remarks)				Freimaßtoleranz (Standard Toleranz)	Maßstab (Scale)	Rauheit (Roughness)	europ.Projektion
All informations provided in this drawing is considered to be confidential, proprietary and secret information. It is intended only for the use of individual or entity to whom it is sent. Individual or entity agrees to not disseminate or copy this information to anyone other than originally specified without the written consent Allectra GmbH.					1:1		
				Datum	Name		
			Design	13.07.2016	JB	Bezeichnung (Title) gender adapter 78 pin UHV Version	Kanten (edges)
			Drawn	14.07.2016	JB		Gewicht (weight) g 21.39
			Check				
					Zeichnungsnummer (Drawing No.) 211-HD78-GA-PK		Revision
Index	Modification	Datum			Name	Datei (File) C:\PDMStore\IC\PDMStore\	