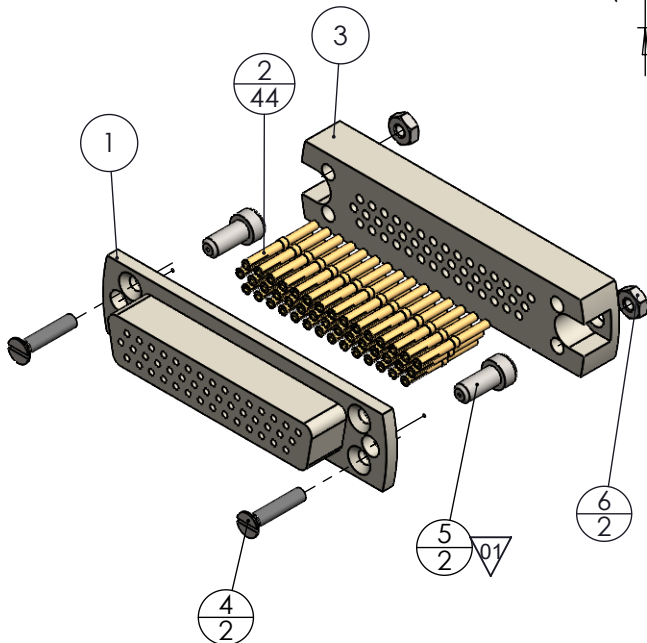
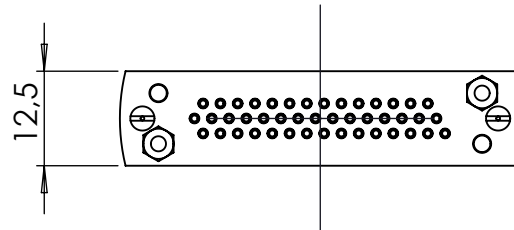
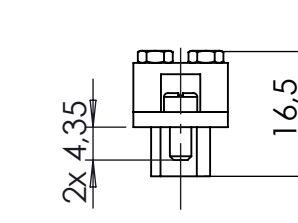
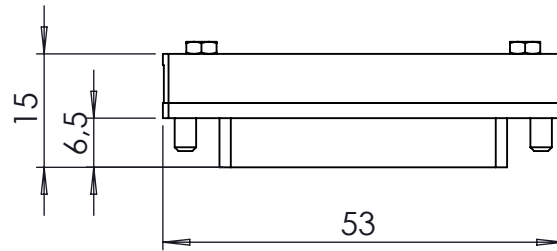
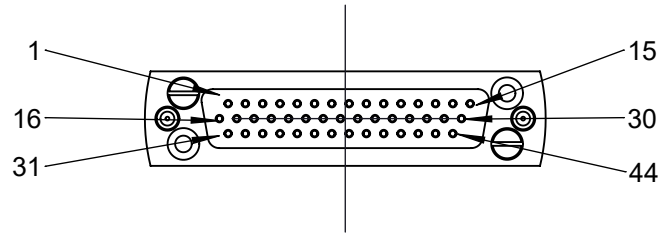


POS. NO.	DESCRIPTION	MATERIAL	QTY
1	front plate for SUB-D 44 Pin female	PEEK (Natur)	1
2	crimp pin 0.7mm	Copper Alloy Gold plated	44
3	back plate for SUB-D 44 Pin	PEEK (Natur)	1
4	screw M2 x10	Stainless Steel	2
5	slotted cheese screw 4-40 UNC, 1/4	1.4301 (X5CrNi18-10)	2
6	hexagon nut M2	Stainless Steel	2



no leakcheck required Definition Leckprüfung (definiton leak check)					
Bemerkung (REMARKS)			Kanten (EDGES)		PROJECTION
Toleranz (TOLERANCE)					
Oberfläche (SURFACE)		Maßstab (SCALE):	Format. (FORM)	PAGE NO	PAGES
Cleaned UHV- Compatible		1:1	A4	1	1
Rauheit (ROUGHNESS)					
Benennung (DESCRIPTION):					
UHV connector 44 Pin female					
high density SUB-D					
Zeich. Nr. (Drw. No.):					REV
211-FS44H-PK					01
Art. Nr. (PART NO.) 211-FS44H-PK					

Zeichnung Nutzung (SCOPE OF DRAWING)		Prüfung Zubehör. (CON + HSG CHECK)	
Drawing external usage for customer			
All informations provided in this drawing is considered to be confidential, proprietary and secret information. It is intended only for the use of individual or entity to whom it is sent. Individidual or entity agrees to not disseminate or copy this information to anyone other than originally specified without the written consent Allectra GmbH.			
Werkstoff (MATERIAL):	Gewicht (WEIGHT):	Toleranz (TOLERANCE):	
	g		
name		DATE	NAME
Workshop		22.10.2024	AD
(drw/doc/sketch) Task: ID-23877		22.10.2024	AD
date		22.10.2024	JB
15.10.2024		22.10.2024	AD
01	Pos5. 5/16 to 1/4 changed		
REV	Beschreibung (CHANGING)	gesp. am (SAVE DAT.):	22.10.2024