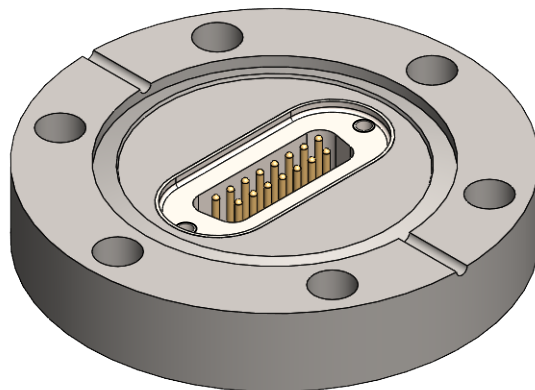
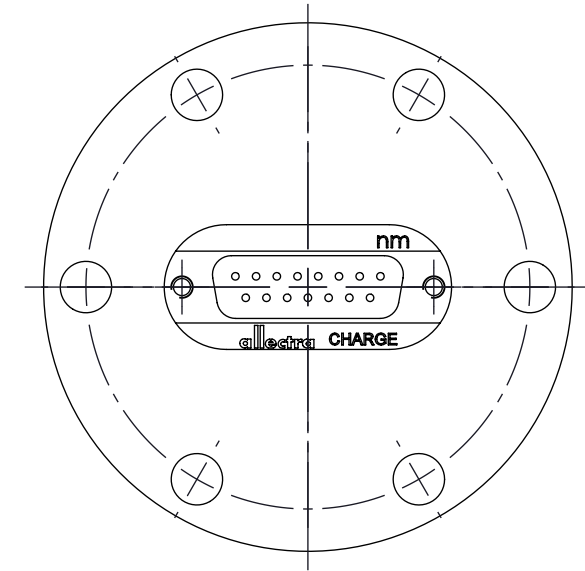
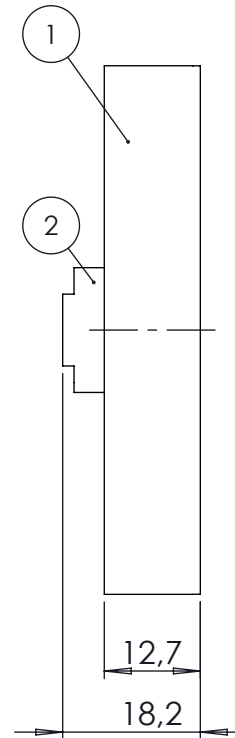
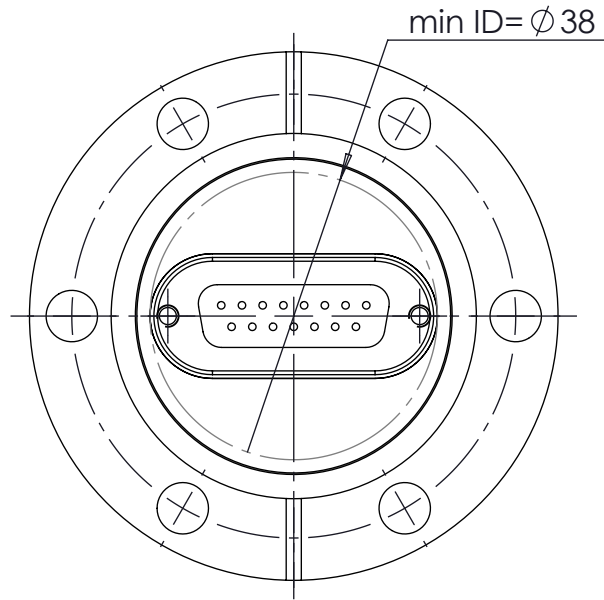


POS-NR.	DESCRIPTION	MATERIAL	QTY
1	modified flange DN40 CF (316LN)	1.4429 (316LN)	1
2	15 pin SUB-D f/t non magnetical type (NM)	Stainless Steel	1



All informations provided in this drawing is considered to be confidential, proprietary and secret information. It is intended only for the use of individual or entity to whom it is sent. Individual or entity agrees to not disseminate or copy this information to anyone other than originally specified without the written consent Allectra GmbH.		Verwendetes Material (USED MATERIAL) HSG-UHV=38		Bemerkung (REMARKS)		Kanten (EDGES) 		PROJECTION 	
Oberfläche (SURFACE) Cleaned UHV- Compatible		Toleranz (TOLERANCE) DIN EN 1390-C (welding ASSY)		Maßstab (SCALE): 1:1		Gewicht (WIGHT): 344.04g			
Rauheit (ROUGHNESS) 		Werkstoff (MATERIAL):		Bl. (page) A4		page 1		pages 1	
origin name Allectra special		DATE		NAME		Benennung (DESCRIPTION): 1 off 15 pin SUB-D f/t (NM) on flange DN40 CF (316LN)			
origin		Design 24.01.2022		AD					
(drw/sketch/part no)		Drawn 05.09.2023		AD					
date of origin		Check 06.09.2023		JB					
00 First version		Approv 06.09.2023		AD		Zeich. Nr. (Drw. No.): 210S-D15-C40-NM			
REV Beschreibung (CHANGING)		LAST SAVE DAT.: 06.09.2023		part. no. 210S-D15-C40-LN		REV 00			