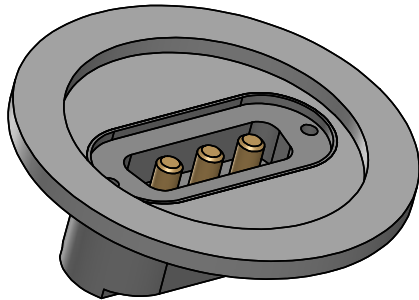
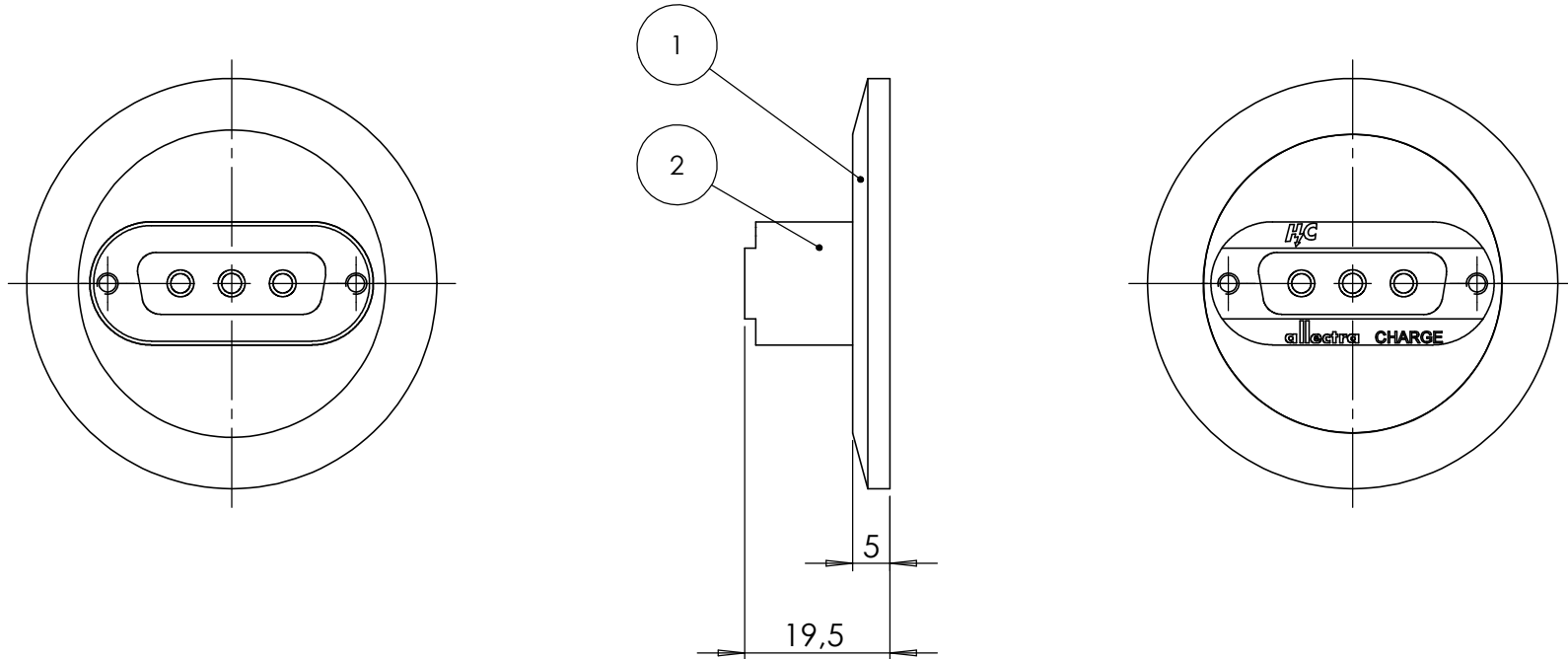


POS-NR.	DESCRIPTION	MATERIAL	QTY
1	modified flange DN40 KF	1.4301 (304)	1
2	3 pin high power SUB-D f/t	stainless steel	1



Bemerkungen (Remarks)				UHV-HSG=40						Rauheit (Roughness)		europ.Projektion			
All informations provided in this drawing is considered to be confidential, proprietary and secret information. If is intended only for the use of individual or entity to whom it is sent. Individual or entity agrees to not disseminate or copy this information to anyone other than originally specified without the written consent Allectra GmbH.				Freimaßtoleranz (Standard Toleranz)		Maßstab (Scale)		Material, Standard Oberfläche (Treatment)							
						1:1									
				Datum		Name		Bezeichnung (Title) 1 off SUB-D f/t, 3 high power pins on flange DN40 KF				Kanten (edges)			
				Design		AD									
				Drawn		AD						Gewicht (weight)		g	
				Check				Zeichnungsnummer (Drawing No.) 210-X15-3P-K40				Revision			
												Page:		Pages:	
								Datei (File) C:\PDM-Store\C:\PDM-Store\				1		1	
Index				Modification		Datum						Name		Format	

