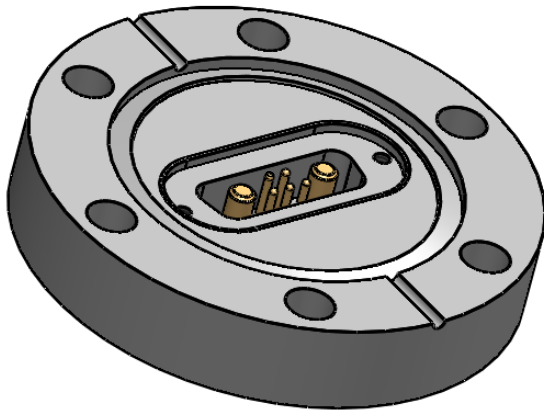
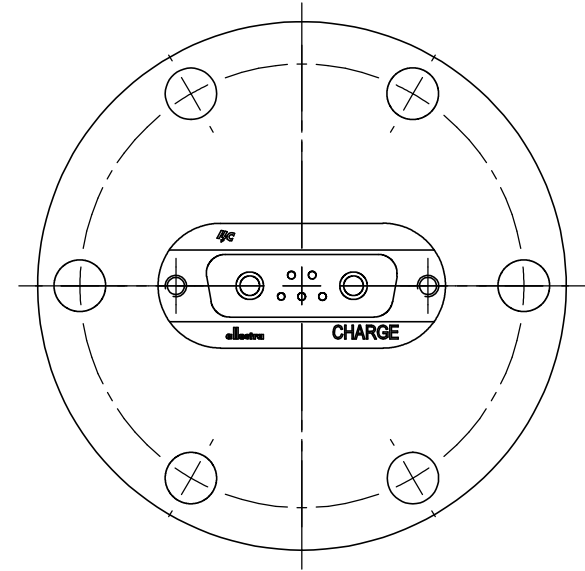
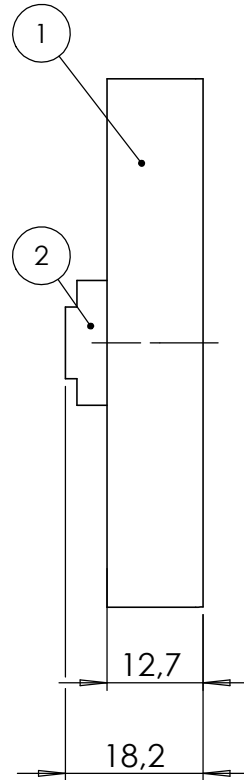
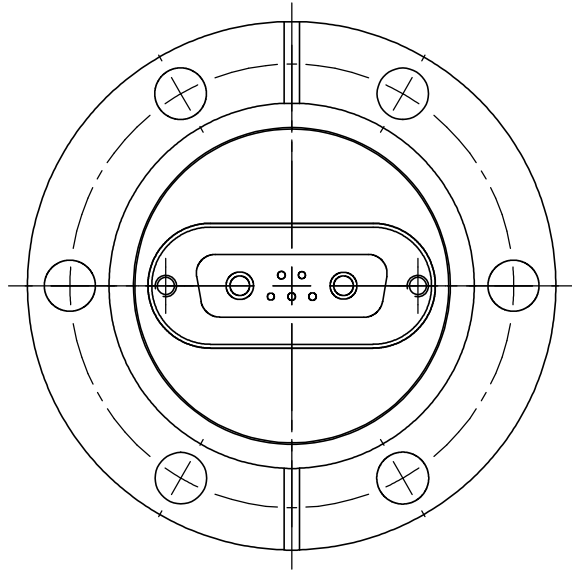


POS-NR.	DESCRIPTION	MATERIAL	QTY
1	modified flange DN40CF	1.4404 (316L)	1
2	2 high power and 5 standard pins mixed SUB-D f/t	Stainless Steel	1



Bemerkungen (Remarks)				Freimaßtoleranz (Standard Toleranz)		Maßstab (Scale)	Rauheit (Roughness)	europ.Projektion
HSG-UHV=38						1:1		
All informations provided in this drawing is considered to be confidential, proprietary and secret information. It is intended only for the use of individual or entity to whom it is sent. Individual or entity agrees to not disseminate or copy this information to anyone other than originally specified without the written consent Allectra GmbH.							Material, Standard Oberfläche (Treatment)	Kanten (edges)
				Datum	Name	Bezeichnung (Title)		Gewicht (weight)
				Design	25.11.2020	AD	1 off mixed pin SUB-D f/t, 2 off high power pins+5 off standard pins on flange DN40CF	g
				Drawn	25.11.2020	AD		346.17
				Check				Page: 1 Pages: 1
						Zeichnungsnummer (Drawing No.)		Revision
						210-X15-2P5-C40		
Index	Modification	Datum	Name			Datei (File) C:\PDM-Store\C:\PDM-Store\		Format A4

