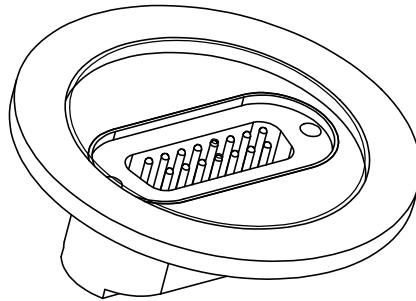
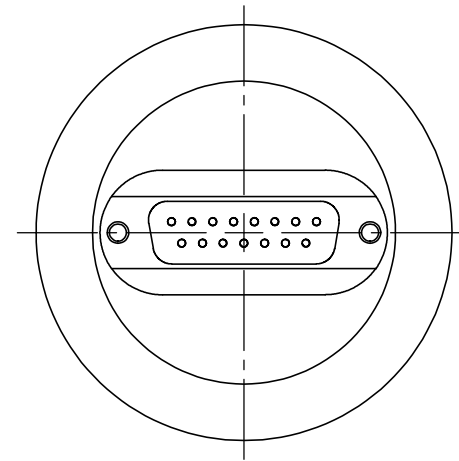
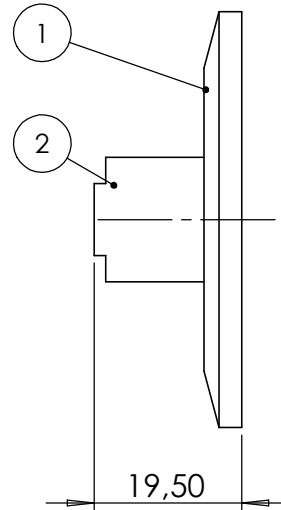
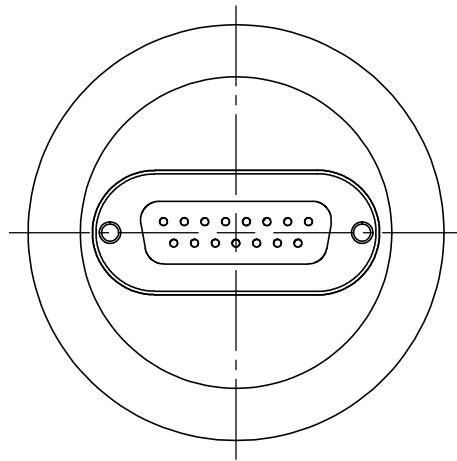


POS-NR.	DESCRIPTION	MATERIAL	QTY
1	modified flange DN40 KF	1.4404 (X2CrNiMo17-12-2)	1
2	SUB-D 15pin F/T	Stainless Steel	1



Bemerkungen (Remarks)				CON-HV-S=40, UHV HSG=40								
All informations provided in this drawing is considered to be confidential, proprietary and secret information. It is intended only for the use of individual or entity to whom it is sent. Individual or entity agrees to not disseminate or copy this information to anyone other than originally specified without the written consent Alletra GmbH.				Freimaßtoleranz (Standard Toleranz)		Maßstab (Scale)		Rauheit (Roughness)		europ.Projektion		
						1:1						
				Datum		Name		Material, Standard Oberfläche (Treatment)		Kanten (edges)		
				Design 16.12.2014		JB		Bezeichnung (Title) 15 pin SUB-D F/T on flange DN40 KF		Gewicht (weight) g		
				Drawn 16.12.2014		JB				183.97		
				Check						Page: 1 Pages: 1		
								Zeichnungsnummer (Drawing No.)		Revision		
								210-D15-K40				
Index				Modification		Datum		Datei (File)		Format A4		
								C:\PDMStore\IC\PDMStore\				

