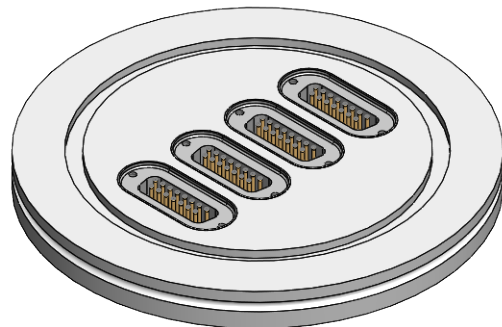
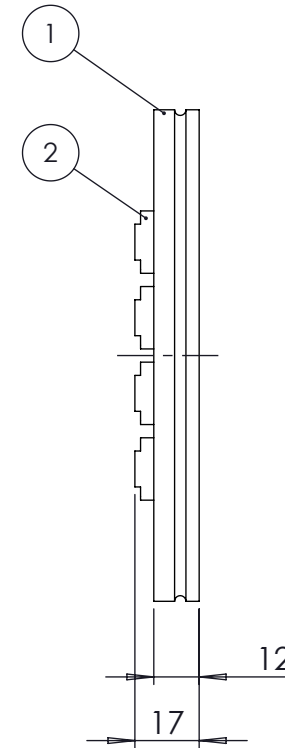
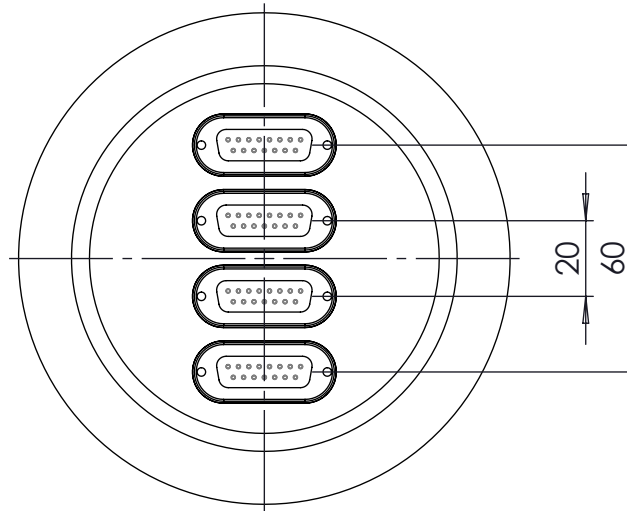


POS-NR.	DESCRIPTION	MATERIAL	QTY
1	modified flange DN100 ISO-K	1.4301 (304)	1
2	Sub-D 15 pin Feedthrough	stainless steel	4



<1 E-9 mbar\*/sec, He, according to DIN EN 1779-A3  
Definition Leckprüfung (definon leak check)

Zeichnung Nutzung (SCOPE OF DRAWING) Drawing external usage for customer		Prüfung Zubehör. (CON + HSG CHECK)		Bemerkung (REMARKS)		Kanten (EDGES)		PROJECTION	
All informations provided in this drawing is considered to be confidential, proprietary and secret information. It is intended only for the use of individual or entity to whom it is sent. Individually or entity agrees to not disseminate or copy this information to anyone other than originally specified without the written consent Alletra GmbH.		Werkstoff (MATERIAL): Gewicht (WEIGHT):		Toleranz (TOLERANCE) DIN EN ISO 13920-C (welding ASSY)					
		Oberfläche (SURFACE) Cleaned HV- Compatible							
origin	name	Alletra standard		DATE	NAME		Benennung (DESCRIPTION): 4 of 15 pin SUB-D f/t on flange DN100 ISO-K		
	(drw/doc/sketch)			Design	13.12.2013	JB			
	date			Drawn	03.07.2024	JB			
				Check	03.07.2024	JUB			
00	first origin			Approv	03.07.2024	JB	Zeich. Nr. (Drw. No.): 210-D15-ISO100-4		REV 00
REV Beschreibung (CHANGING)		gesp. am (SAVE DAT.): 03.07.2024		Art. Nr. (PART NO.): 210-D15-ISO100-4					

