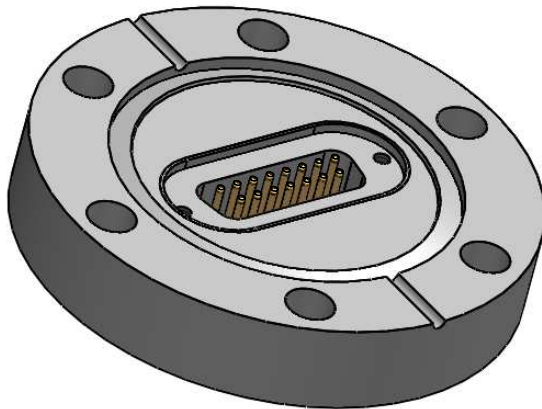
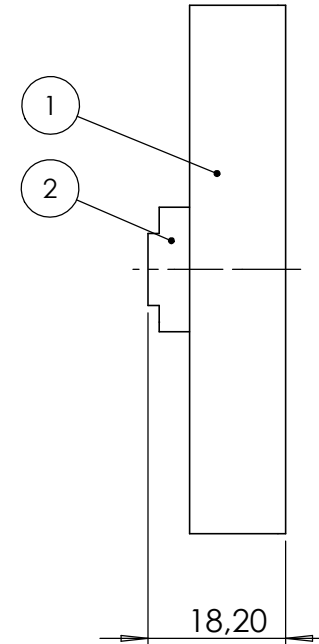
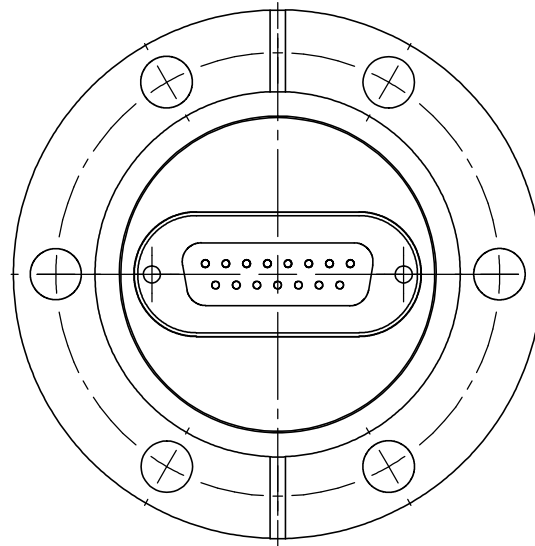


POS-NR.	DESCRIPTION	MATERIAL	QTY
1	modified flange DN40CF	1.4404 (316L)	1
2	15 pin SUB-D f/t	Stainless Steel	1



Bemerkungen (Remarks)				HSG-UHV=38		Freimaßtoleranz (Standard Toleranz)		Maßstab (Scale)	Rauheit (Roughness)		europ.Projektion			
All informations provided in this drawing is considered to be confidential, proprietary and secret information. It is intended only for the use of individual or entity to whom it is sent. Individual or entity agrees to not disseminate or copy this information to anyone other than originally specified without the written consent Allectra GmbH.				Datum		Name		1:1						
				Design		06.01.2015							JB	
				Drawn		21.06.2017							JB	
				Check										
								Material, Standard Oberfläche (Treatment)		Kanten (edges)				
								Bezeichnung (Title)		Gewicht (weight) g				
								1 of 15 pin SUB-D f/t on flange DN40CF		345.00				
								Zeichnungsnummer (Drawing No.)		Page: Pages:				
								210-D15-C40		1 1				
										Revision				
Index				Modification		Datum				Datei (File)		Format A4		
								X:\PDM-Store\X:\PDM-Store\						