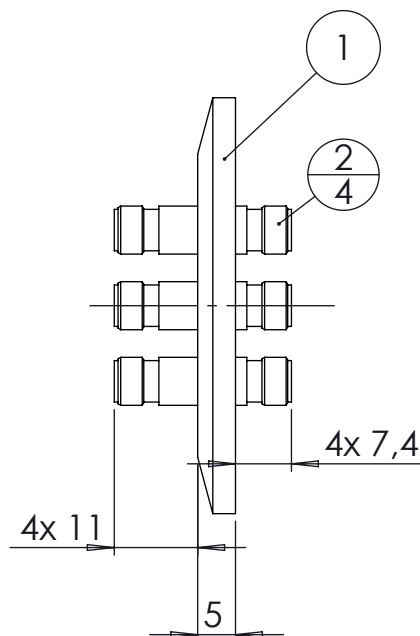
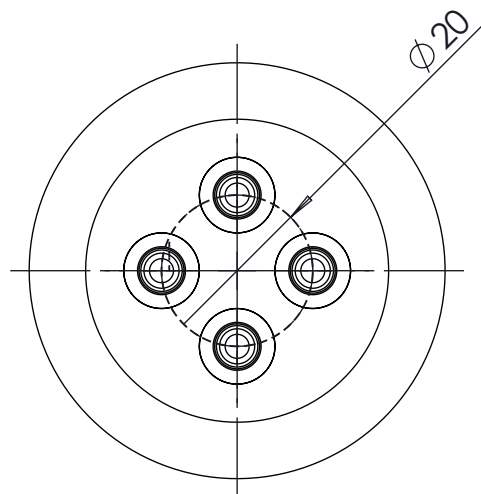
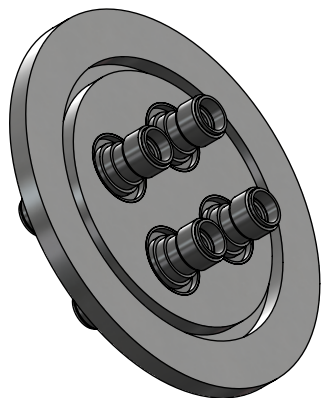
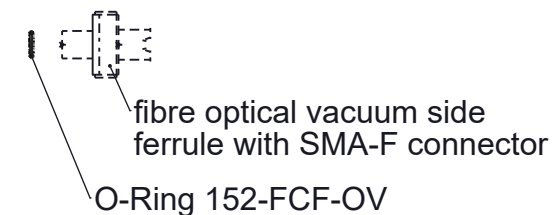


POS. NO.	DESCRIPTION	MATERIAL	QTY
1	modified flange DN40 KF	1.4301 (304)	1
2	optical coupler f/t FCF	1.4404 (316L)	4



connector view



<1 E-10 mbar\*/sec, He, according to DIN EN 1779-A3  
Definition Leckprüfung (definon leak check)

Zeichnung Nutzung (SCOPE OF DRAWING) Drawing external usage for customer		Prüfung Zubehör. (CON + HSG CHECK)		Bemerkung (REMARKS)		Kanten (EDGES)		PROJECTION	
All informations provided in this drawing is considered to be confidential, proprietary and secret information. It is intended only for the use of individual or entity to whom it is sent. Individually or entity agrees to not disseminate or copy this information to anyone other than originally specified without the written consent Allectra GmbH.		Werkstoff (MATERIAL): Gewicht (WEIGHT):		Toleranz (TOLERANCE):					
		Oberfläche (SURFACE) Cleaned UHV- Compatible		DIN EN ISO 13920-C (welding ASSY)					
				Maßstab (SCALE):	Format. (FORM)	PAGE NO	PAGES	Rauheit (ROUGHNESS)	
				1:1	A4	1	1		
origin	name	Allectra standard		DATE	NAME		Benennung (DESCRIPTION): 4 off optical coupler f/t on flange DN40 KF		
	(drw/doc/sketch)			Design	21.02.2014	JB			
	date			Drawn	19.09.2024	AD			
				Check	19.09.2024	JB			
00	first origin			Approv	19.09.2024	AD	Zeich. Nr. (Drw. No.): 152-FCF-K40-4		
						REV			
						00			
REV	Beschreibung (CHANGING)	gesp. am (SAVE DAT.): 19.09.2024		Art. Nr. (PART NO.) 152-FCF-K40-4					