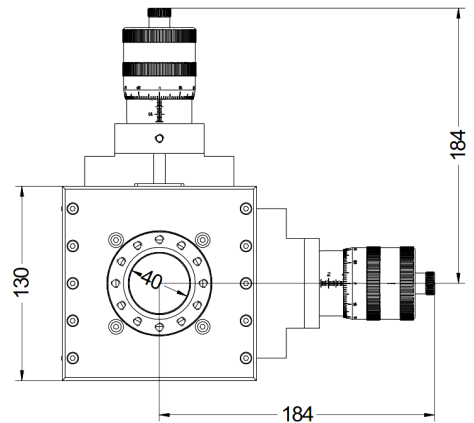


**XY Tables with +/-12.5mm travel: 622-XY-12-C40-40 / 622-XY-12-C63-40
622-XY-12-C63-63 / 622-XY-12-C100-63**

Manual X-Y tables are build with big micrometer screws for travel. The readout is 10µm, with the stepper motor option, the resolution for all tables is 1µm. Top and base flange have tapped holes.



Flange sizes	40-40	63-40	63-63	100-63
Top flange	DN40CF	DN40CF	DN63CF	DN63CF
Base flange	DN40CF	DN63CF	DN63CF	DN100CF
Bellows/Free ID	40mm	52mm	70mm	70mm
Max ø for full travel	27,5mm	39,5mm	57,5mm	57,5mm
Flange to Flange	103mm	103mm	114,5mm	114,5mm
Vacuum	UHV Leak rate <math>< 1 \times 10^{-10}</math> mbar l/s			
Max. Bakeout	230°C			
X-Y travel (mm)	+/-12.5mm (circle)			
Drive	Micrometer			
Readout	10µm (X,Y,Z)			



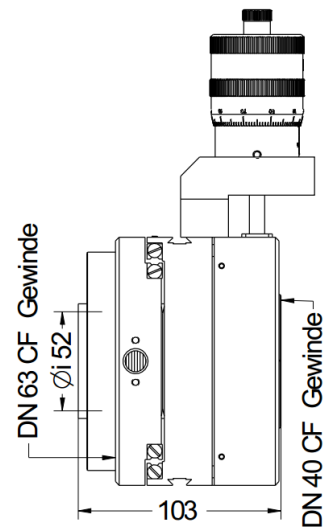
Available options:

- Stepper motors
- limit switches (standard / bakeable)
- Linear encoders

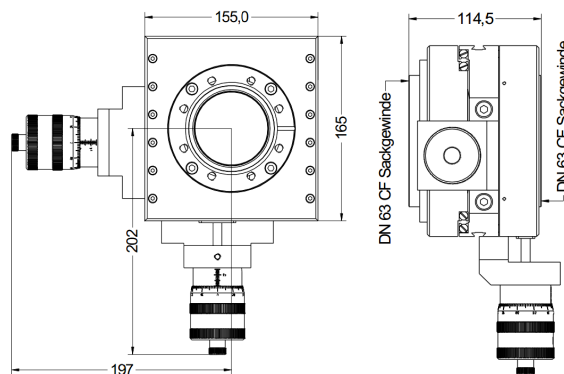
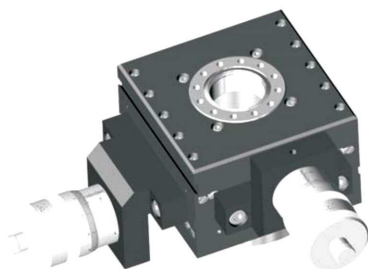
Please ask for a quote for your desired version.

If only travel in one direction is required, a X-only table for the size DN40CF is available.

Larger tables (DN160CF) and tables with +/-25mm travel are available in addition.



Top: Dimensions of the 40-63 type XY table. The 40-40 table has the same dimensions



Left: Dimensions of the 63-63 table.