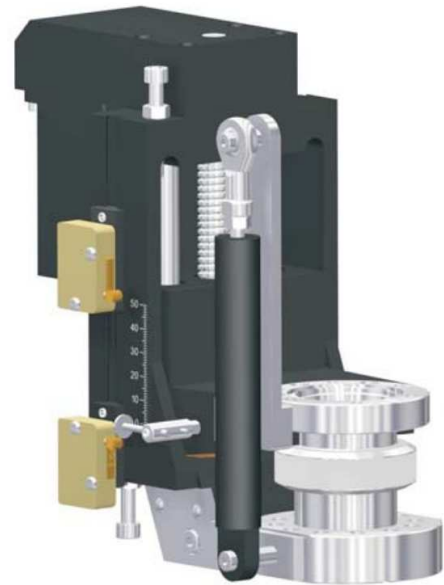
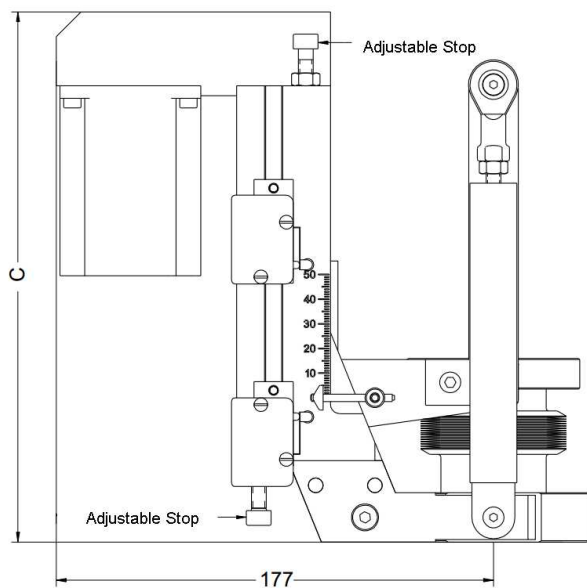


## 621-ZLT-C40-xxx SM

Sketch of motorized linear manipulator DN40CF with stepper motor and the options

- 2x limit switches
- linear potentiometer

Two adjustable stops are standard



Travel	50mm	100mm	150mm	200mm	250mm	300mm	400mm	500mm	600mm
Hight C	215mm	280mm	345mm	410mm	475mm	540mm	695mm	815mm	940mm

Other lengths on request

Other specifications are identical with manual version