

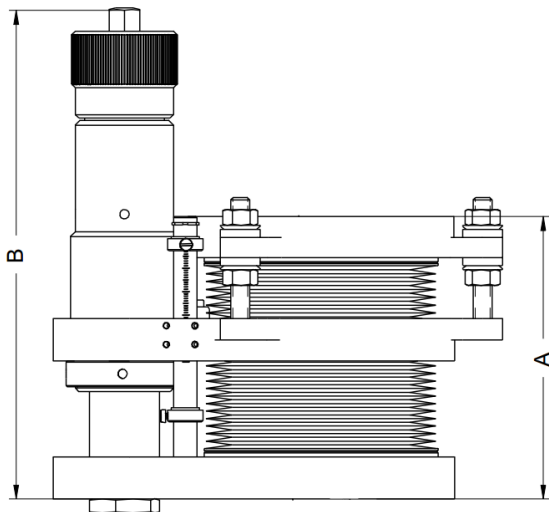
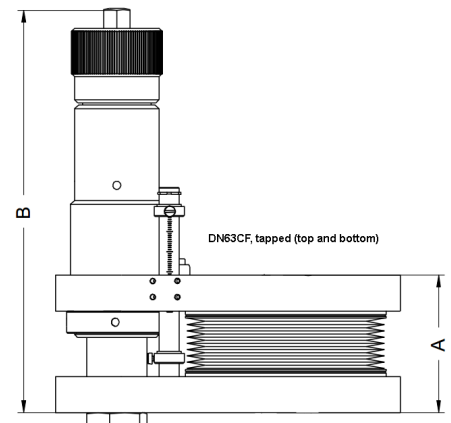
## Compact Linear Drives DN63CF: 621-CLT-C63-xxx

Compact linear drives or Z-manipulators with a travel from 50mm to 100mm are offered from Allectra. These drives are optimized for min. flange to flange distance, they use tapped flanges on both sides

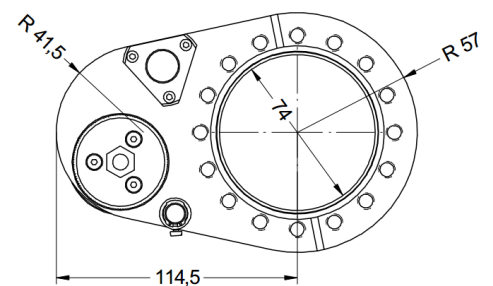
|                                | 50mm  | 100mm |
|--------------------------------|---|-------|
| Top flange                     | DN63CF metric tapped                        |       |
| Base flange                    | DN63CF metric tapped                        |       |
| Vacuum                         | UHV Leak rate $<1 \times 10^{-10}$ mbar l/s |       |
| Max. Bakeout                   | 230°C                                       |       |
| Bellow ID                      | 74mm  |       |
| Readout                        | 0,1mm                                       |       |
| A min (mm)                     | 49  | 60    |
| B min (mm)                     | 182   | 229   |
| A min with port aligner option | 93  | 105   |
| Port aligner adjusting range   | +/-5°                                       |       |

A max = A min + travel, B max = B min + travel

If more options are required, we recommend using the Linear Manipulator series ZLT-C63-xx with travels up to 600mm.



*Version with optional port aligner*



|   |
|---|
| <b>Type</b>                                 |
| 621-CLT-C63-50                              |
| 621-CLT-C63-100                             |
|   |
| <b>Option: With integrated port aligner</b> |
| 621-CLT-C63-50-PA                           |
| 621-CLT-C63-100-PA                          |