

Compact Linear Drives DN40CF: 621-CLT-C40-xxx

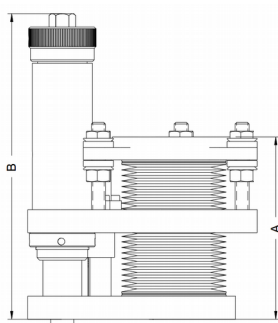
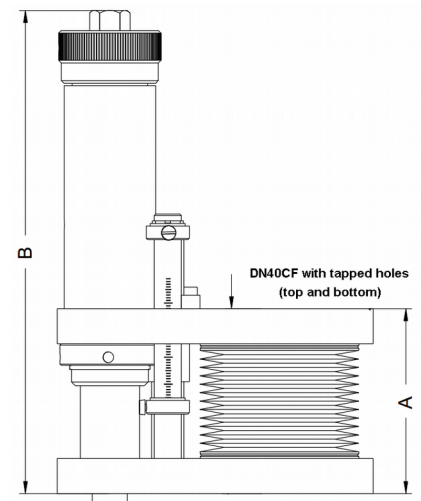
Compact linear drives or Z-manipulators with a travel from 50mm to 150mm are offered from Allectra. These drives are optimized for min. flange to flange distance, they use tapped flanges on both sides

	50mm	100mm	150mm
Top flange	DN40CF metric tapped		
Base flange	DN40CF metric tapped		
Vacuum	UHV Leak rate $<1 \times 10^{-10}$ mbar l/s		
Max. Bakeout	230°C		
Bellow ID	39mm		
Readout	0,1mm		
A min (mm)	43,5	55	65
B min (mm)	153	206	255
A min with port aligner option	82,5	82,5	
Port aligner adjustment	+/-5°		

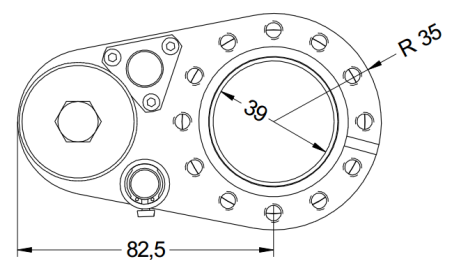
A max = A min + travel, B max = B min + travel

If more options are required, we recommend using the Linear Manipulator series ZLT-C40-xx with travels up to 600mm.

Similar manipulators with 63CF flanges are available as well.



Version with optional port aligner



Type
621-CLT-C40-50
621-CLT-C40-100
621-CLT-C40-150
Option: With integrated port aligner
621-CLT-C40-50-PA
621-CLT-C40-100-PA