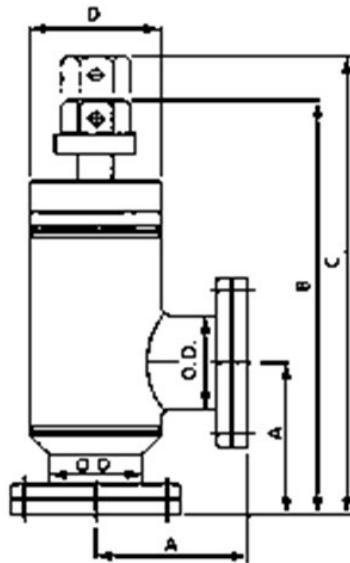


## Dimensions and specifications of bakeable all-metal valves

### 512-AMV2-C16 / 512-AMV2-C40 / 512-AMV2-C63



Size	Part Code	A (mm)	B (mm)	C (mm)	D (mm)	O.D. (mm)
DN16CF	512-AMV2-C16	38,1	122	133	38,1	19
DN40CF	512-AMV2-C40	62,5	170	189	54	38,1
DN63CF	512-AMV2-C63	105	266	294	76,2	63,5

### Specifications:

	512-AMV2-C16	512-AMV2-C40	512-AMV2-C63
Vacuum	UVH $1 \times 10^{-10}$ mbar, 1 bar max.		
Max bakeout	300°C closed, 400°C open		
Min. temperature	-200°C		
Materials	Stainless Steel with Copper Sealing disk		
Closure torque first	15Nm	30Nm	30Nm
Closure torque, max	25Nm	60Nm	90Nm
Hex nut size	SW19	SW24	SW30
Orientation	Any position		
Gasket lifetime	typ. 50 times		

A calibrated dial for closure is provided on the top of the valve body for reference, but the max. torque should not exceed the above given values,

Properly lubricate the drive shaft to prevent wearing the thread. The drive shaft must be re-lubricated after maximum high temperature bake. .