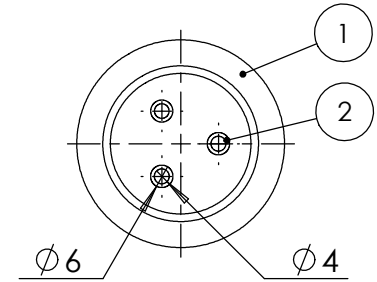
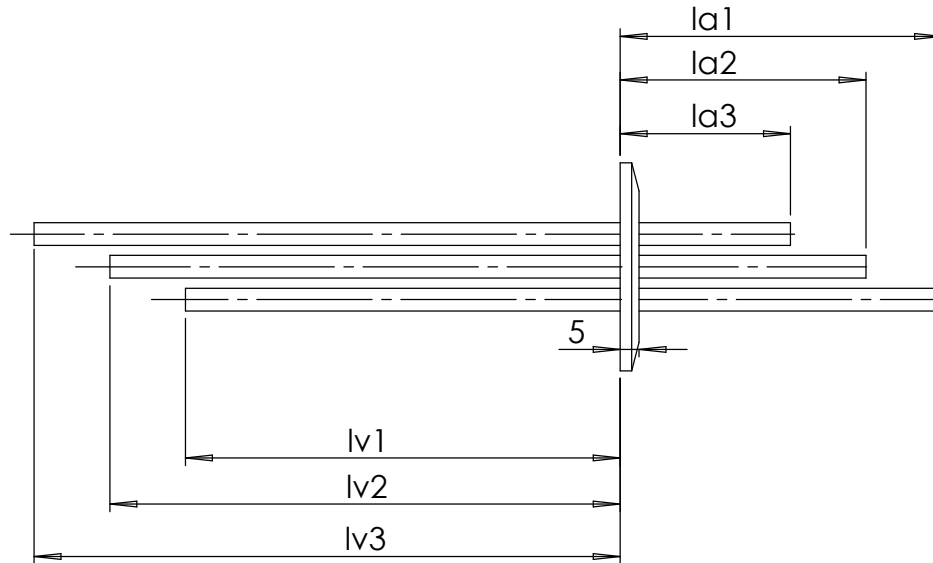
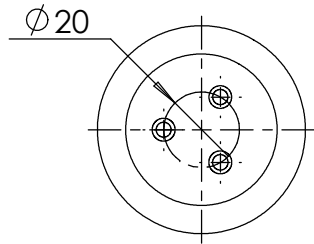
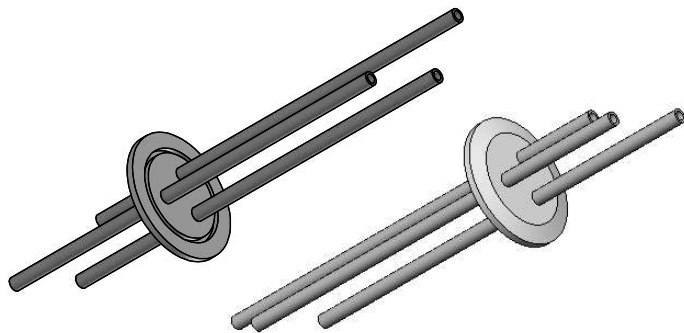


POS-NR.	DESCRIPTION	MATERIAL	QTY
1	modified flange DN40 KF	1.4301 (304)	1
2	tube 6x1	1.4404 (316L)	3



part number	length vac			length air		
	lv1	lv2	lv3	lva	la2	la3
461-TU6/3-120-80/140-60/160-20-K40	120	140	160	80	60	40



Bemerkungen (Remarks)				Freimaßtoleranz (Standard Toleranz)		Maßstab (Scale)	Rauheit (Roughness)		europ.Projektion	
All informations provided in this drawing is considered to be confidential, proprietary and secret information. If is intended only for the use of individual or entity to whom it is sent. Individual or entity agrees to not disseminate or copy this information to anyone other than originally specified without the written consent Allectra GmbH.				DIN EN ISO 13920: 1996		1:2				
				Datum		Name				
				Design		30.05.2018	JB			
				Drawn		30.05.2018	JB			
Check				Material, Standard		Oberfläche (Treatment)		Kanten (edges)		
				Bezeichnung (Title)		3 of tubes 6x1		Gewicht (weight) 9		
						on flange DN40 KF		Page: 1 Pages: 1		
						Zeichnungsnummer (Drawing No.)		Revision		
						461-TU6_3-X-X-K40				
Index	Modification	Datum	Name	Datei (File)		C:\PDMStore\C:\PDMStore\		Format A4		