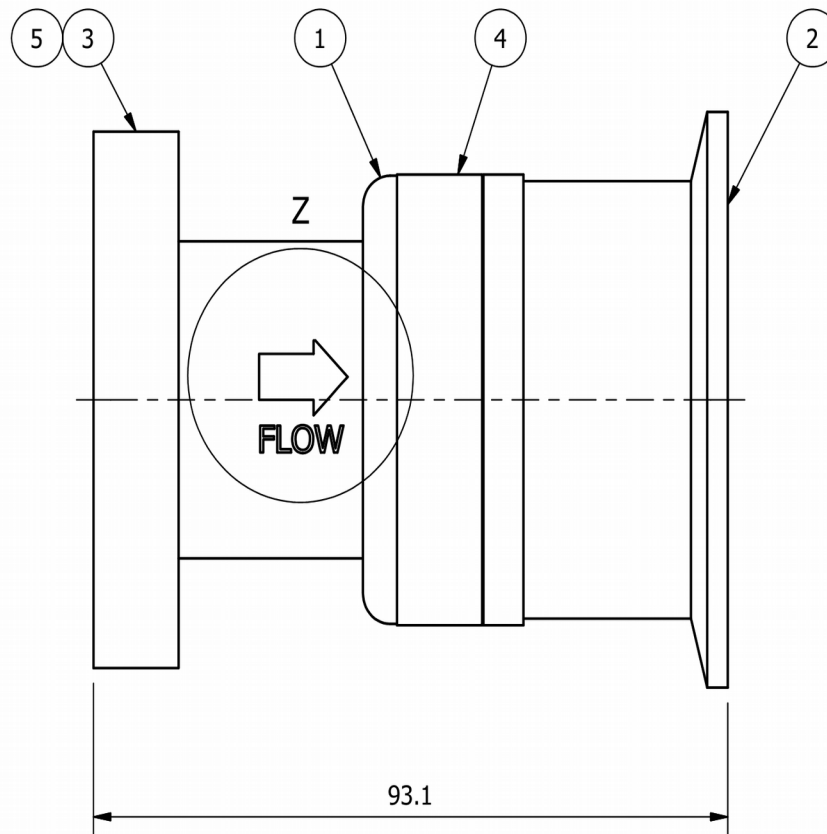


Pressure Burst Disk with Gas Recovery

- Low Pressure version DN40CF to KF50 flange, 461-PBD-C40-K50-LP

(max. 0.8 bar differential pressure)



5/3: DN40CF tubulated flange

1/4: Low pressure burst disk with adapter, for specification see separate data sheet

2: Exhaust flange 50KF

Flow rate approx. 150l/s