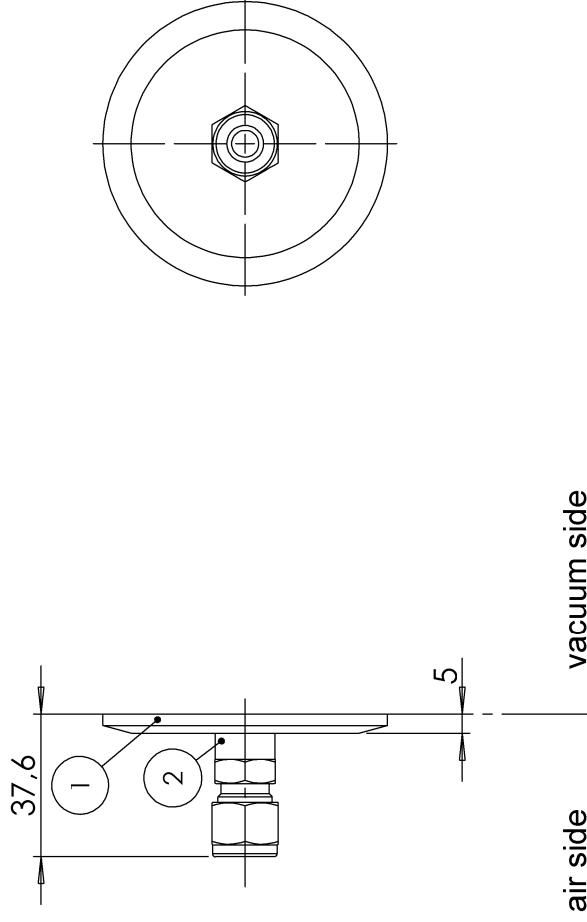
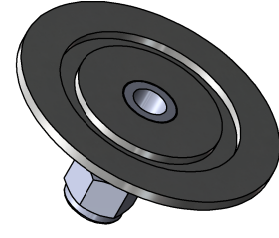


POS-NR.	DESCRIPTION	MATERIAL	QTY
1	modified flange DN50 KF	1.4301 (304)	1
2	Swagelok adaptor for tube 3/8, weldable stainless steel		1



air side

vacuum side



Bemerkungen (Remarks)		Freimaßtoleranz (Standard Toleranz)	Maßstab (Scale)	Rauheit (Roughness)	europ. Projektion
<p>All informations provided in this drawing is considered to be confidential, proprietary and secret information. It is intended only for the use of individual or entity to whom it is sent. Individual or entity agrees to not disseminate or copy this information to anyone other than originally specified without the written consent Allectra GmbH.</p>		1:2	Material, Standard Oberfläche (Treatment)		
<p>Design 08.06.2021 Drawn 08.06.2021 Check</p>		1:2	Material, Standard Oberfläche (Treatment)		
<p>Datum 08.06.2021</p>		1:2	Material, Standard Oberfläche (Treatment)		
<p>Name</p>		1:2	Material, Standard Oberfläche (Treatment)		
<p>Bezeichnung</p>		1:2	Material, Standard Oberfläche (Treatment)		
<p>1 off Swagelok adaptor 3/8" on flange DN50 KF</p>		1:2	Material, Standard Oberfläche (Treatment)		
<p>Gewicht (weight) 143.96</p>		1:2	Material, Standard Oberfläche (Treatment)		
<p>Page: 1 Pages: 1</p>		1:2	Material, Standard Oberfläche (Treatment)		
<p>Zeichnungsnummer (Drawing No.) 461-K50-SWG9.5</p>		1:2	Material, Standard Oberfläche (Treatment)		
<p>Revision</p>		1:2	Material, Standard Oberfläche (Treatment)		
<p>Index</p>		1:2	Material, Standard Oberfläche (Treatment)		
<p>Modification</p>		1:2	Material, Standard Oberfläche (Treatment)		
<p>Datum</p>		1:2	Material, Standard Oberfläche (Treatment)		
<p>Name</p>		1:2	Material, Standard Oberfläche (Treatment)		
<p>allectra</p>		1:2	Material, Standard Oberfläche (Treatment)		
<p>Datei (file) c:\ppm\store\c:\ppm\store\</p>		1:2	Material, Standard Oberfläche (Treatment)		
<p>Format A4</p>		1:2	Material, Standard Oberfläche (Treatment)		