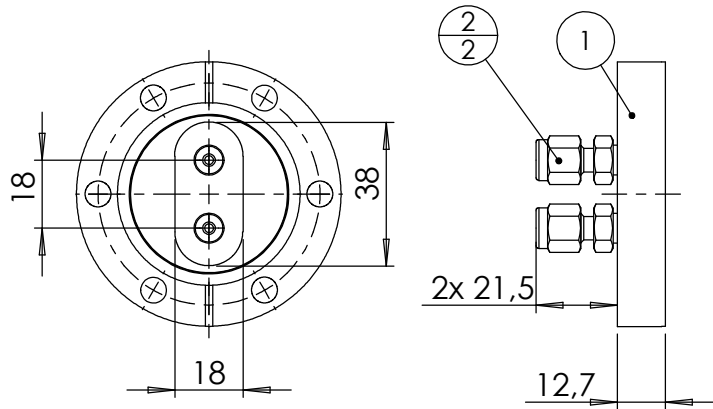
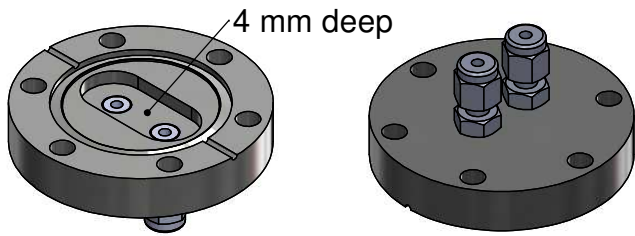


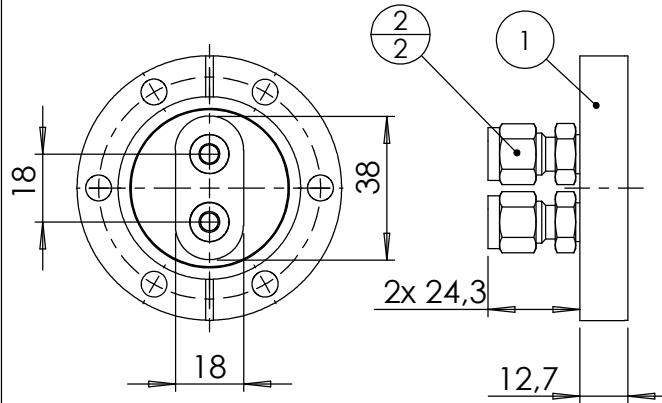
POS-NR.	DESCRIPTION	MATERIAL	QTY
1	modified flange DN40 CF	1.4404 (316L)	1
2	connection adaptor 1/8" stainless steel		2



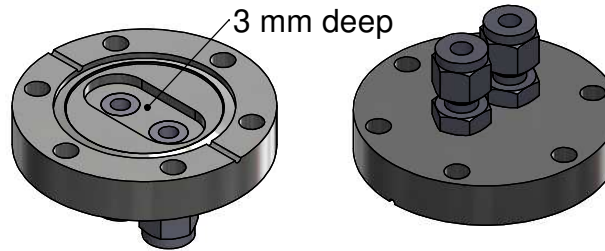
461-C40-SWG3.17/2  
version 1/8"



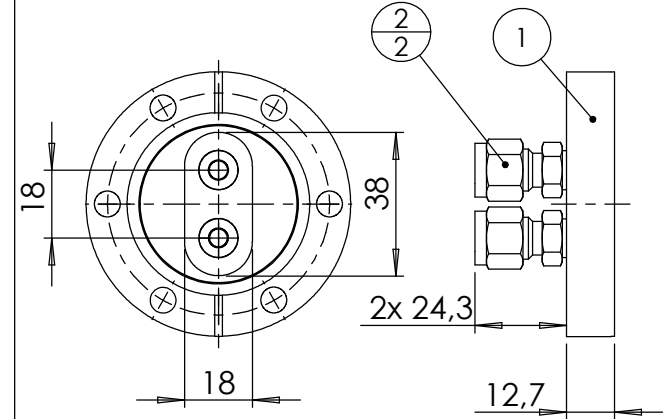
POS-NR.	DESCRIPTION	MATERIAL	QTY
1	modified flange DN40 CF	1.4404 (316L)	1
2	connection adaptor 6 mm stainless steel		2



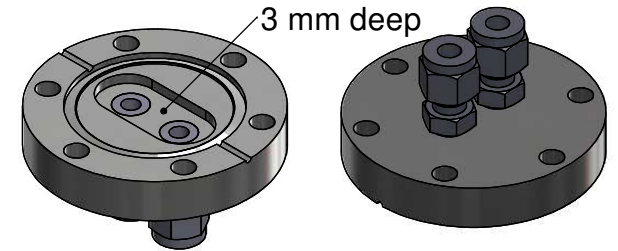
461-C40-SWG6/2  
version 6mm



POS-NR.	DESCRIPTION	MATERIAL	QTY
1	modified flange DN40 CF	1.4404 (316L)	1
2	Swagelok adaptor 1/4" stainless steel		2



461-C40-SWG6.35/2  
version 1/4"



Bemerkungen  
(Remarks)

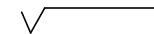
All informations provided in this drawing is considered to be confidential, proprietary and secret information. If is intended only for the use of individual or entity to whom it is sent. Individual or entity agrees to not disseminate or copy this information to anyone other than originally specified without the written consent Allectra GmbH.

Freimaßtoleranz  
(Standard Tolerance)

Maßstab  
(Scale)

1:2

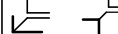
Rauheit (Roughness)



europ.Projektion



Kanten (edges)



Gewicht  
(weight) 9

	Datum	Name
Design	31.03.2022	AD
Drawn	31.03.2022	AD
Check		

Bezeichnung  
(Title)

2 off Swagelok adaptors 1/8", 6mm, 1/4"  
on flange DN40 CF

Page: 1  
Pages: 1



Zeichnungsnummer  
(Drawing No.)

461-C40-SWGX\_2

Revision

Index	Modification	Date	Name

Datei (File) C:\PDM-Store\C:\PDM-Store\

Format A4