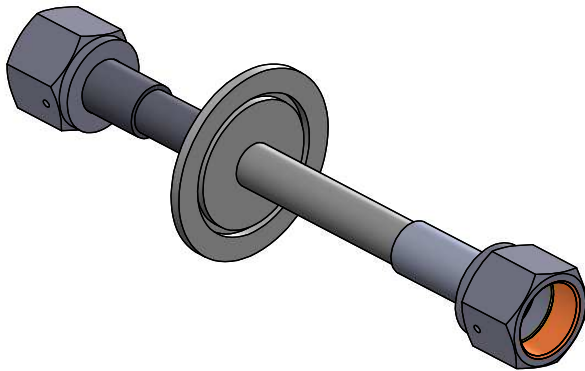
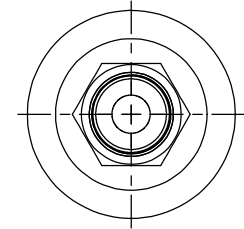
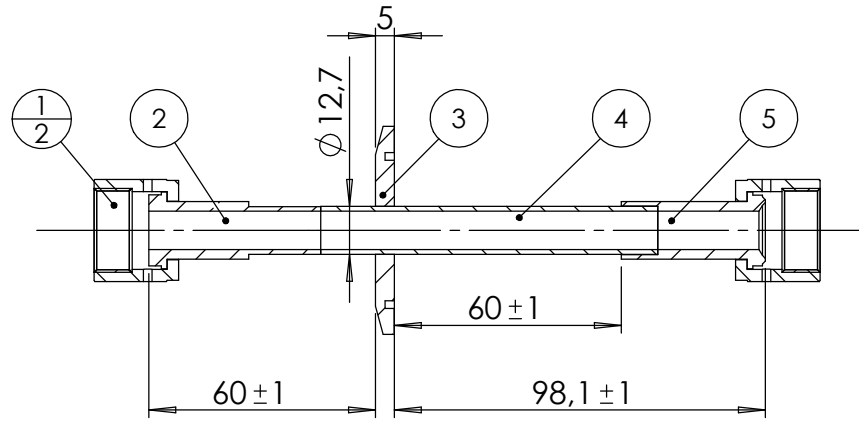
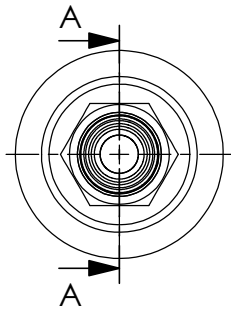


POS-NR.	DESCRIPTION	MATERIAL	QTY
1	VCR nut 1/2"	stainless steel	2
2	VCR gland 1/2"	stainless steel	1
3	modified flange DN40 KF	1.4301 (304)	1
4	tube 12.7x1.2	1.4404 (316L)	1
5	VCR 1/2", socket weld gland	stainless steel	1

SECTION A-A



Bemerkungen (Remarks)				Freimaßtoleranz (Standard Tolerance)		Maßstab (Scale)	Rauheit (Roughness)	europ.Projektion	
All informations provided in this drawing is considered to be confidential, proprietary and secret information. If is intended only for the use of individual or entity to whom it is sent. Individual or entity agrees to not disseminate or copy this information to anyone other than originally specified without the written consent Allectra GmbH.				Datum		Name	Material, Standard Oberfläche (Treatment)	Kanten (edges)	
				Design	24.10.2022	AD	Bezeichnung (Title) 2 off VCR 1/2", female on flange DN40 KF		
				Drawn	24.10.2022	AD			
				Check					
						Zeichnungsnummer (Drawing No.)		Revision	
						460-VCR-FF-1270-K40			
Index	Modification	Date	Name	Datei (File)		C:\PDMstore\C:\PDMstore\		Format A4	