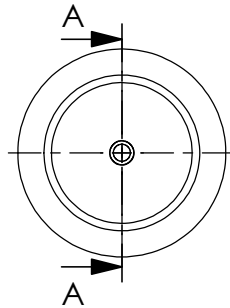
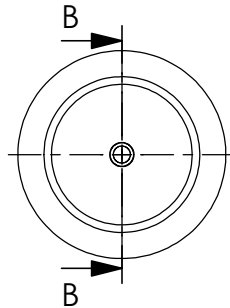


FLANGE	VCR	ITEM NO.	
K16	1/8"	female	460-K16-VCRF1/8
		male	460-K16-VCRM1/8
	1/4"	female	460-K16-VCRF1/4
		male	460-K16-VCRM1/4
	1/2"	female	460-K16-VCRF1/2
		male	460-K16-VCRM1/2
K40	1/8"	female	460-K40-VCRF1/8
		male	460-K40-VCRM1/8
	1/4"	female	460-K40-VCRF1/4
		male	460-K40-VCRM1/4
	1/2"	female	460-K40-VCRF1/2
		male	460-K40-VCRM1/2
K63	1/8"	female	460-K63-VCRF1/8
		male	460-K63-VCRM1/8
	1/4"	female	460-K63-VCRF1/4
		male	460-K63-VCRM1/4
	1/2"	female	460-K63-VCRF1/2
		male	460-K63-VCRM1/2

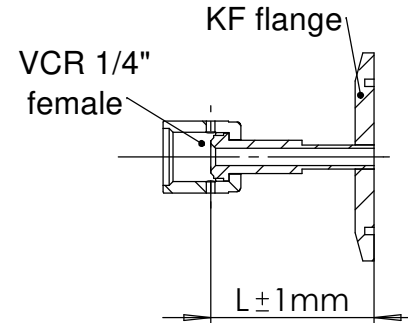
Item 460-K40-VCRF1/4  
is shown



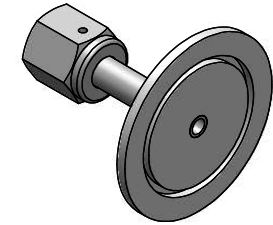
Item 460-K40-VCRM1/4  
is shown



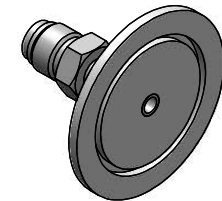
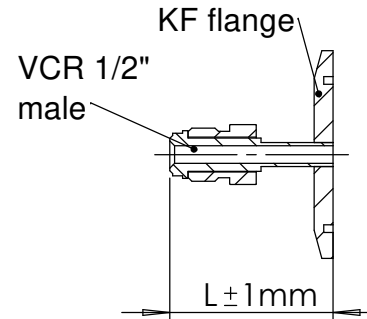
SECTION A-A



VCR	L
1/8"	36,1
1/4"	43,2
1/2"	45,5



SECTION B-B



Bemerkungen (Remarks)				Freimaßtoleranz (Standard Tolerance)		Maßstab (Scale)	Rauheit (Roughness)	europ.Projektion
All informations provided in this drawing is considered to be confidential, proprietary and secret information. If is intended only for the use of individual or entity to whom it is sent. Individual or entity agrees to not disseminate or copy this information to anyone other than originally specified without the written consent Allectra GmbH.				Datum		1:2		
				Name				
Design				15.11.2022		AD		Kanten (edges)
Drawn				21.11.2022		AD		
Check								
								Gewicht (weight) <b>g</b>
								1
								1
								Revision
								1
								1
Index				Modification		Date		Name
								Format <b>A4</b>



Zeichnungsnummer (Drawing No.)  
**460-KX-VCRX-X**

Datei (File) C:\PDMstore\C:\PDMstore\