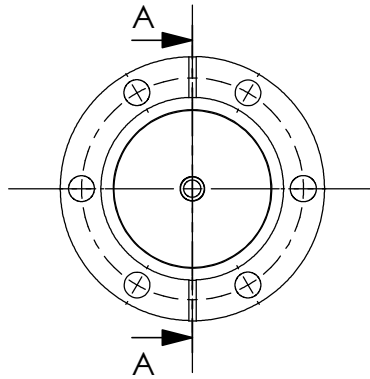
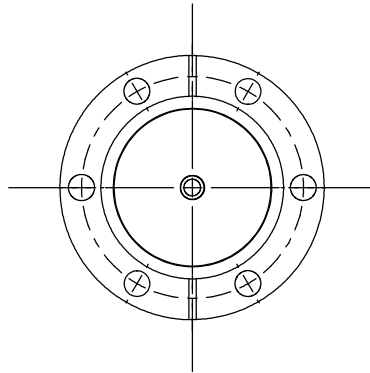


FLANGE	VCR	ITEM NO.	
C16	1/8"	female	460-C16-VCRF1/8
		male	460-C16-VCRM1/8
	1/4"	female	460-C16-VCRF1/4
		male	460-C16-VCRM1/4
	1/2"	female	460-C16-VCRF1/2
		male	460-C16-VCRM1/2
C40	1/8"	female	460-C40-VCRF1/8
		male	460-C40-VCRM1/8
	1/4"	female	460-C40-VCRF1/4
		male	460-C40-VCRM1/4
	1/2"	female	460-C40-VCRF1/2
		male	460-C40-VCRM1/2
C63	1/8"	female	460-C63-VCRF1/8
		male	460-C63-VCRM1/8
	1/4"	female	460-C63-VCRF1/4
		male	460-C63-VCRM1/4
	1/2"	female	460-C63-VCRF1/2
		male	460-C63-VCRM1/2

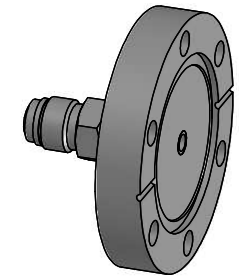
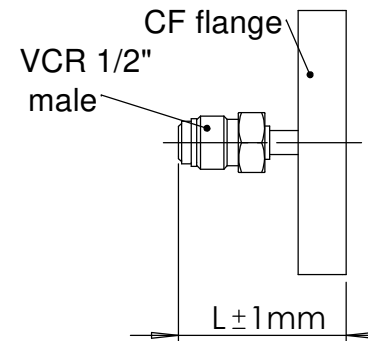
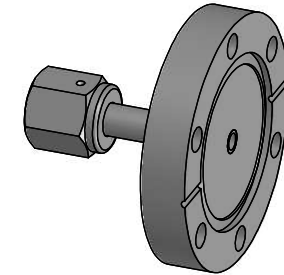
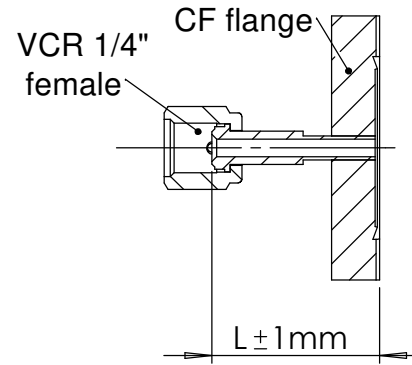
Item 460-C40-VCRF1/4  
is shown



Item 460-C40-VCRM1/4  
is shown



SECTION A-A



VCR	L
1/8"	37,3
1/4"	44,4
1/2"	46,7

Bemerkungen (Remarks)				Freimaßtoleranz (Standard Tolerance)		Maßstab (Scale)		Rauheit (Roughness)		europ.Projektion	
All informations provided in this drawing is considered to be confidential, proprietary and secret information. If is intended only for the use of individual or entity to whom it is sent. Individual or entity agrees to not disseminate or copy this information to anyone other than originally specified without the written consent Allectra GmbH.				Datum		Name		Material, Standard Oberfläche (Treatment)		Kanten (edges)	
				Design 14.11.2022		AD					
				Drawn 21.11.2022		AD		Bezeichnung (Title)		Gewicht (weight) 9	
				Check							
								1 off VCR 1/8", 1/4", 1/2" female/ male on flange DN16/40/63 CF, one side ( air side)		Page: 1	
										Pages: 1	
								Zeichnungsnummer (Drawing No.) 460-CX-VCRX-X		Revision	
Index		Modification		Date		Name		Datei (File) C:\PDMstore\C:\PDMstore\		Format A4	

