

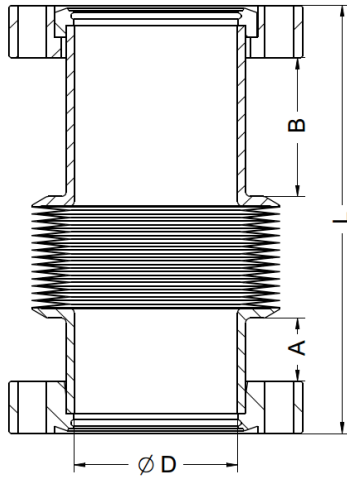
## Bellows types

Bellows can be done with different tube length and with tapped flanges to reduce the total length.  
Always one flange is rotatable

Here a short overview over standard arrangements

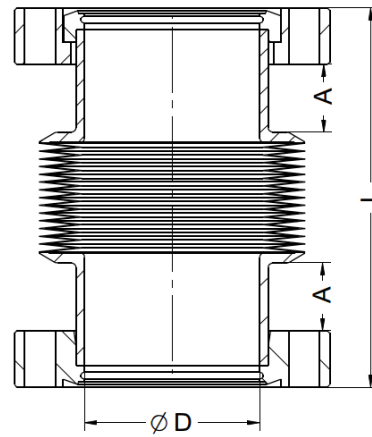
### 1) LONG-SHORT (LS)

Screws can be inserted on one flange,  
For nuts on the second flange



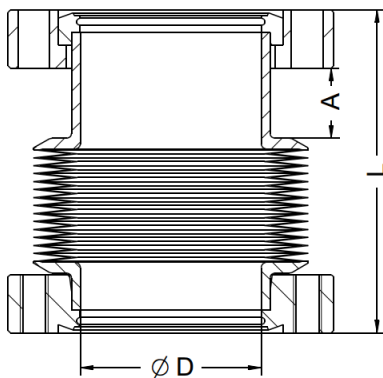
### 2) SHORT-SHORT (SS)

For nuts on both flanges



### 3) SHORT-TAPPED (ST)

One tapped flange  
For nuts on the second flange



### 4) TAPPED-TAPPED (TT)

Two tapped flanges  
- shortest possible design -

