

UHV Edge Welded Bellows with CF flanges

- 453-EWB-Cxx-yyy-LN** (Standard version for nuts)
- 453-EWB-Cxx-yyy-L-LN** (One extended tube end)
- 453-EWB-Cxx-yyy-T-LN** (One tapped flange)
- 453-EWB-Cxx-yyy-TT-LN** (Two tapped flanges)

Available sizes: DN16CF / 40CF / 63CF / 100CF / 160CF (xx: 16 to 160)

Standard travel 25mm / 50mm / 75mm / 100mm
150mm / 200mm (yyy: 025 to 200)

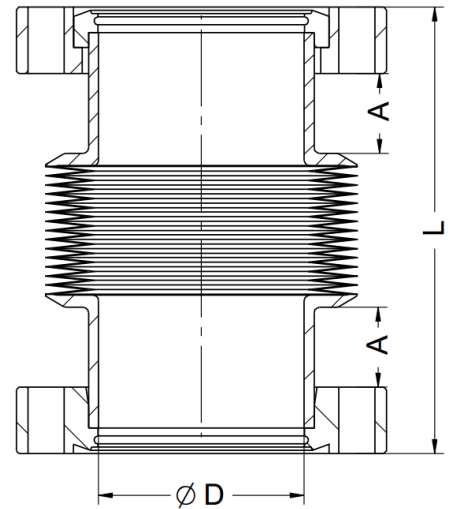
Flanges 1x rotatable, 1x fixed
Through holes or tapped holes option

Designed cycles 10.000 (full stroke)

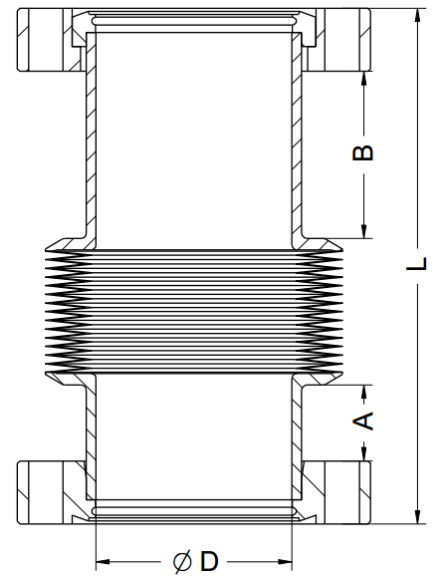
Material Bellows and tubes 1.4404 = **316L**
Flanges 1.4429 = **316LN**

4 versions Standard "-LN" (for nuts)
Long "-L-LN" (for bolts)
One Taped flange "-T-LN"
Two Tapped flanges "-TT-LN"

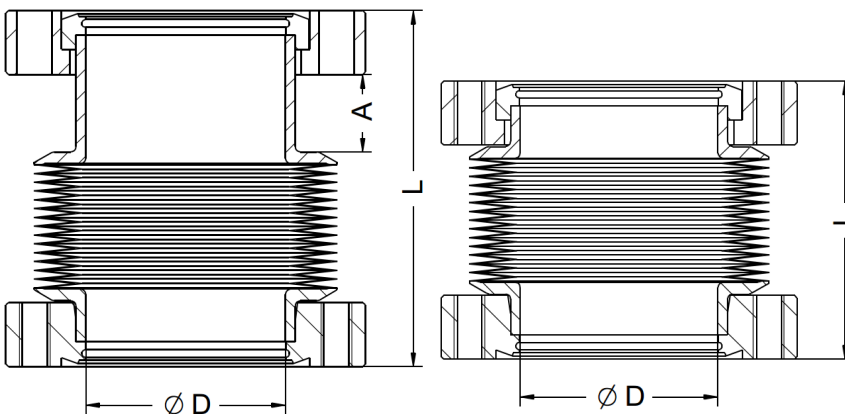
Free ID ($\varnothing D$)
16CF: 16mm
40CF: 38mm
63CF: 70mm
100CF: 102mm
160CF: 160mm



Standard version „-LN“ for use with nuts. Studs might be required for installation



Version „-L-LN“ (long) with one extended tube for inserting screws



Short version „-T-LN“ with one tapped flange

Extra short version „-TT-LN“ with two tapped flanges

All bellows of this series are non-magnetic versions with bellows and tube material 316L and flange material 316LN

Size	A	B	Travel	Version -LN L	Version -L-LN L	Version -T-LN L	Version -TT-LN L
16CF	12mm	22mm	25mm	51-76mm	61-86mm	39-64mm	28-53mm
			50mm	60-110mm	70-120mm	48-98mm	37-87mm
			75mm	69-144mm	79-154mm	57-132mm	46-121mm
			100mm	78-178mm	88-188mm	66-166mm	55-155mm
40CF	14mm	35mm	25mm	63-88mm	84-109mm	49-74mm	36-61mm
			50mm	68-118mm	89-139mm	55-105mm	41-91mm
			75mm	74-149mm	95-170mm	60-135mm	47-122mm
			100mm	79-179mm	100-200mm	66-166mm	52-152mm
63CF	17mm	45mm	25mm	79-104mm	107-132mm	63-88mm	46-71mm
			50mm	86-136mm	114-164mm	70-120mm	53-103mm
			75mm	93-168mm	121-196mm	77-152mm	60-135mm
			100mm	100-200mm	128-228mm	84-184mm	67-167mm
100CF	17mm	50mm	25mm	84-109mm	117-142mm	68-93mm	51-76mm
			50mm	90-140mm	123-173mm	73-123mm	57-107mm
			75mm	95-170mm	128-203mm	79-154mm	62-137mm
			100mm	101-201mm	134-234mm	84-184mm	68-168mm
160CF	17mm	55mm	25mm	87-112mm	125-150mm	71-96mm	54-79mm
			50mm	93-143mm	131-181mm	76-126mm	60-110mm
			75mm	98-173mm	136-211mm	82-157mm	65-140mm
			100mm	103-203mm	141-241mm	87-187mm	70-170mm

For dimensions of other strokes, please contact our sales offices