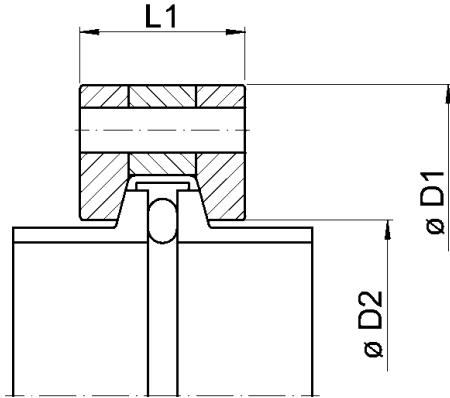


KF Chain Clamps

Aluminium versions: 444-CC-K16-AL-B to 444-CC-K50-AL-B
 444-CC-K16-AL to 444-CC-K63-AL
 Stainless Steel versions 444-CC-K16-SS to 444-CC-K63-SS



Top: Stainless Steel chain clamps, the High Quality Aluminium versions have same sizes.

Right: Basic quality Al clamp

	444-CC-Kxx-AL-B Aluminium, basic quality	444-CC-Kxx-AL Aluminium, high quality	444-CC-Kxx-SS Stainless Steel
Material	Aluminium, Steel	Al, Stainless Steel	Stainless Steel
Width L1	18mm	KF16 to KF50: 18mm KF63: 20mm	KF16 to KF50: 18mm KF63: 20mm
Outer Diameter D1	KF16: 52mm KF25: 62mm KF40: 77mm KF50: 95mm	KF16: 50mm KF25: 60mm KF40: 75mm KF50: 95mm KF63: 111mm	KF16: 50mm KF25: 60mm KF40: 75mm KF50: 95mm KF63: 111mm
Inner Diameter D2		KF16: 21mm KF25: 31mm KF40: 46mm KF50: 66mm KF63: 78mm	KF16: 21mm KF25: 31mm KF40: 46mm KF50: 66mm KF63: 78mm
Thread size	M5	M6	M6
Key size	SW13	SW13	SW13
Required torque (depending on size)	0.6 ... 2.5Nm	0.6 ... 2.5Nm (Elastomers) 2.5 ... 6Nm (Metal seals)	0.6 ... 2.5Nm (Elastomers) 2.5 ... 6Nm (Metal seals)
Max. allowed torque	3.5Nm	7Nm	7Nm

Please note: The dimensions D1 and D2 are nominal values, they vary, depending on the applied torque.

The High quality Aluminium and Stainless Steel clamps from DN16 to DN50 are suitable for the metal sealed Cefix flanges!

	444-CC-Kxx-AL-B Aluminium, basic quality	444-CC-Kxx-AL Aluminium, high quality	444-CC-Kxx-SS Stainless Steel
Material	Aluminium, Steel	Aluminium with Stainless Steel links	Stainless Steel
Temperature range with Aluminium seals	-200°C ... 150°C	-200°C ... 150°C	-200°C ... 150°C
Temperature range with Copper seals	---	-200°C ... 150°C	-200°C ... 350°C
Suitable for Aluminium seals	Yes max. size DN40KF	Yes	Yes
Suitable for overpressure*)	No	Yes KF16: 64 bar KF25: 32 bar KF40: 16 bar KF50: 8 bar	Yes KF16: 80 bar KF25: 40 bar KF40: 20 bar KF50: 10 bar
Magnetic	Yes	No ($\mu < 1,01$)	Low
Options	---	Versions for higher pressure	

The High quality Aluminium and the Stainless Steel clamps from DN16 to DN50 are suitable for the metal sealed Cefix flanges!

*) The given values are for applications at room temperature, with elastomer gaskets, without additional forces on the flange connection. Values are given for guidance only, they might vary for specific situations.