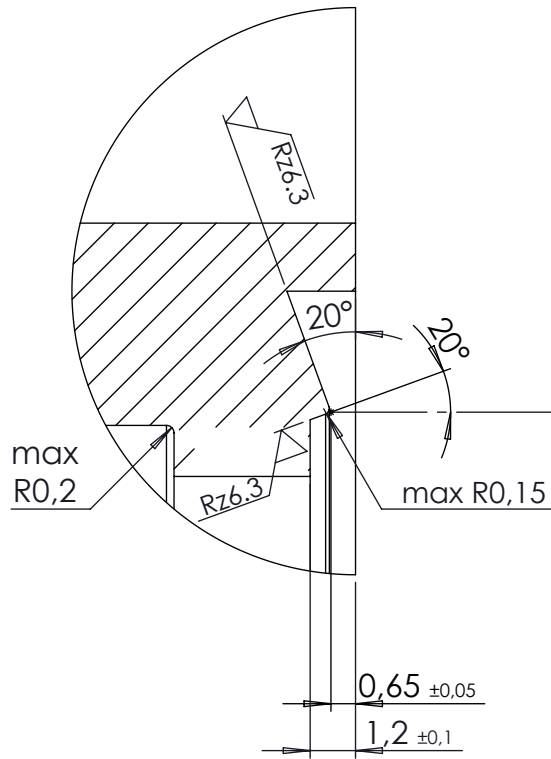
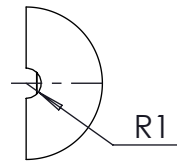


411-CFB40-41 view

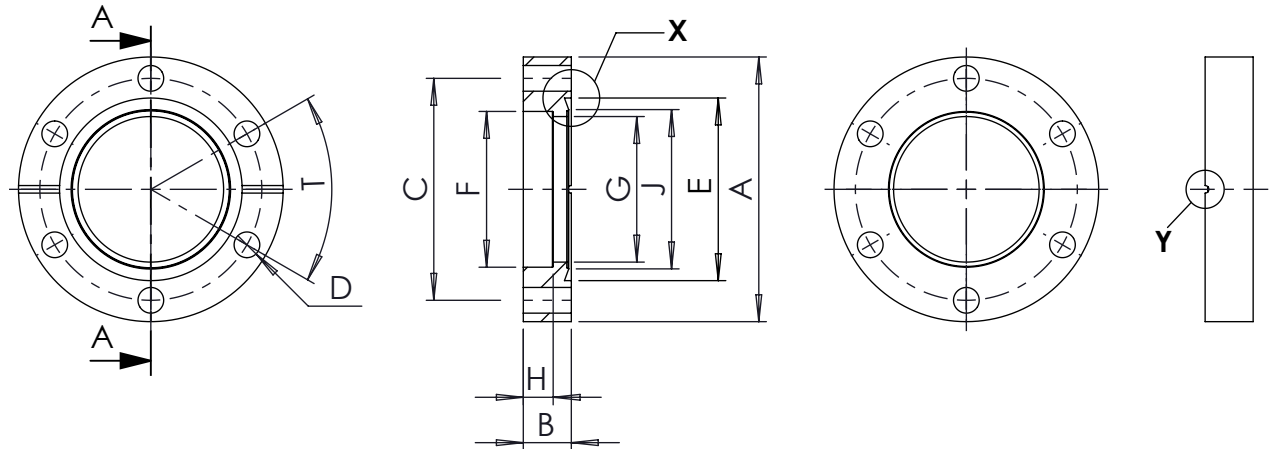
DETAIL X
SCALE 5 : 1



DETAIL Y
SCALE 2 : 1

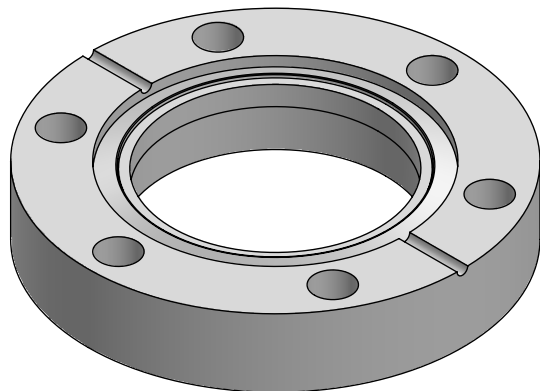


SECTION A-A



| Part No. | A +/-0,1 | B +/-0,1 | C | D +0,2/0 | E +/-0,1 | F +0,1/0 | G +/-0,1 | H +0/-0,1 | J +/-0,1 | T |
|---------------|----------|----------|--------|----------|----------|----------|----------|-----------|----------|-------|
| 411-CF16-19 | 34,00 | 7,60 | 27,00 | 6x 4,40 | 21,40 | 19,20 | 16,50 | 2,80 | 18,30 | 60 |
| 411-CF40-41 | 70,00 | 12,70 | 58,70 | 6x 6,80 | 48,20 | 41,20 | 38,50 | 7,90 | 41,90 | 60 |
| 411-CF63-70 | 113,50 | 17,50 | 92,20 | 8x 8,40 | 82,50 | 70,30 | 66,50 | 9,40 | 77,20 | 45 |
| 411-CF100-104 | 152,00 | 19,90 | 130,30 | 16x 8,40 | 120,60 | 104,3 | 100,50 | 10,40 | 115,30 | 22,5 |
| 411-CF160-154 | 203,00 | 22,40 | 181,00 | 20x 8,40 | 171,40 | 154,3 | 150,50 | 12,30 | 166,1 | 18 |
| 411-CF200-204 | 254,00 | 24,00 | 231,80 | 24x 8,40 | 222,20 | 204,3 | 200,50 | 12,30 | 216,9 | 15 |
| 411-CF250-254 | 305,00 | 24,00 | 284,00 | 32x 8,40 | 273,10 | 254,5 | 250,50 | 12,30 | 267,5 | 11,25 |

SCALE 1:1



| | | | | | | | | | | | | | |
|--|----------------------------------|---|------------|--|------|------------------------------|---|------------|--|---------|--|---|--|
| Zeichnung Nutzung (using drawing) Drawing external use for customer | | Verwendetes Material (USED MATERIAL) Werkstoff (MATERIAL): 1.4404 (316L) Gewicht (WIGHT): 3980,23g | | Definition Leckprüfung (definiton leak check) Bemerkung (REMARKS) Technical specification: ISO/TS 3669-2 Toleranz (TOLERANCE) DIN ISO 2768-f-H (machining metal) | | Kanten (EDGES) +0,1 -0,25 | | PROJECTION | | | | | |
| All informations provided in this drawing is considered to be confidential, proprietary and secret information. It is intended only for the use of individual or entity to whom it is sent. Individual or entity agrees to not disseminate or copy this information to anyone other than originally specified without the written consent Allectra GmbH. | | Oberfläche (SURFACE) Cleaned alkaline degreasing | | Maßstab (SCALE): 1:2 | | Format. (FORM) A4 | | PAGE NO 1 | | PAGES 1 | | Rauheit (ROUGHNESS) √ Rz 16 (Rz 6.3) | |
| origin | name | Allectra standard | | DATE | NAME | | Benennung (DESCRIPTION): bored welding fix flange DN40 CF type CF | | | | | | |
| | (drw/doc/sketch) | Design | 10.10.2014 | JB | | | | | | | | | |
| | date | Drawn | 16.02.2024 | AD | | | | | | | | | |
| | | Check | 19.02.2024 | JUB | | | | | | | | | |
| 02 | Thickness of CF200+CF250 changed | | Approv | 19.02.2024 | AD | | Zeich. Nr. (Drw. No.): 411-CFX-X | | | | | | |
| REV Beschreibung (CHANGING) | | gesp. am (SAVE DAT.): 19.02.2024 | | Art. Nr. (PART NO.) | | | | | | | | REV 02 | |

