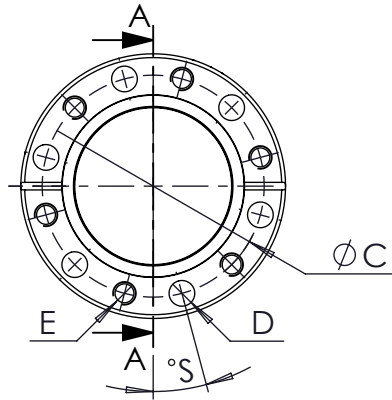
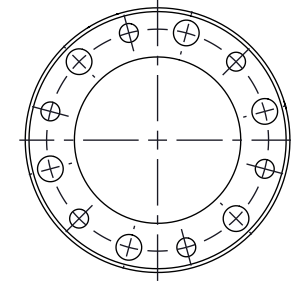
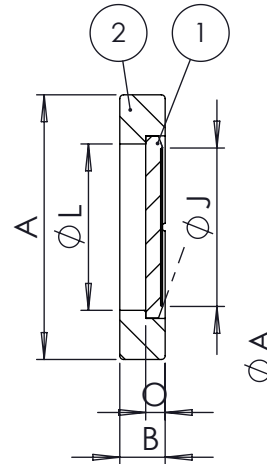


411-ACF40-TI
is shown



SECTION A-A



POS-NR.	DESCRIPTION	MATERIAL	QTY
1	insert part for welding	3.7165 (TI-Grade 5) ASTM B265	1
2	outer Ring for rotatable flange	3.7165 (TI-Grade 5) ASTM B265	1

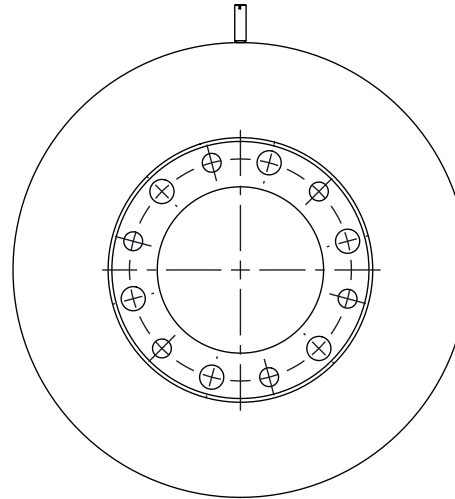
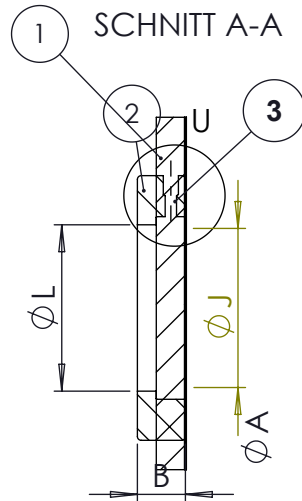
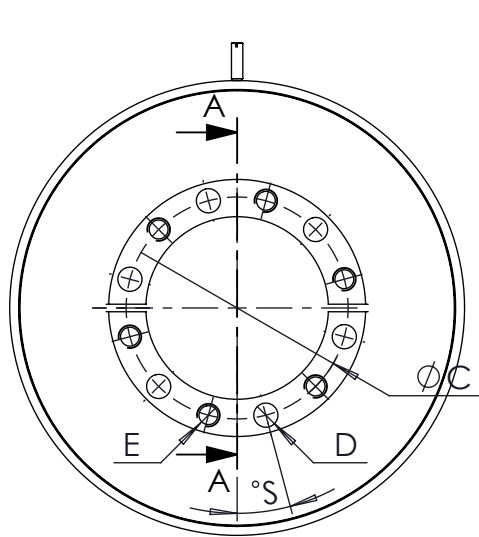
Part No.	A	B	C	D	E	J +/-0,1	L	O	S°
411-ACF16-TI	34	7,0	27,0	6x 4,4	6x M4	18,3	19,5	4,65	15
411-ACF40-TI	70	12,0	58,7	6x 6,8	6x M6	41,9	44	5,15	15
411-ACF63-TI	113,5	15,0	92,2	8x 8,4	8x M8	77,2	72	7,65	11,25
411-ACF100-TI	152	15,0	130,3	16x 8,4	16x M8	115,3	110	8,65	5,625
411-ACF160-TI	203	17,0	181,0	20x 8,4	20x M8	166,1	161	9,65	4,5
411-ACF200-TI	254	20,0	231,8	24x 8,4	24x M8	216,9	208	9,65	3,75
411-ACFB250-TI	305	20,0	284,0	32x 8,4	32x M8	267,5	258	9,65	2,81



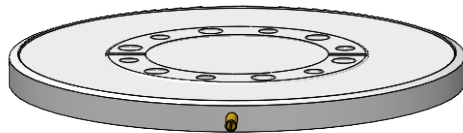
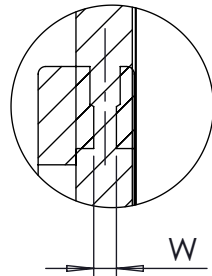
Material certificate
reference



<p>All informations provided in this drawing is considered to be confidential, proprietary and secret information. It is intended only for the use of individual or entity to whom it is sent. Individual or entity agrees to not disseminate or copy this information to anyone other than originally specified without the written consent Allectra GmbH.</p>		<p>Verwendetes Material (USED MATERIAL)</p>	<p>Bemerkung (REMARKS)</p> <p>CF-Flange ISO3669-2</p>	<p>Kanten (EDGES)</p> <p>$\sqrt{R_{z0,1}}$ $\sqrt{R_{z0,25}}$</p>	<p>PROJECTION</p>	
<p>Oberfläche (SURFACE)</p> <p>Cleaned UHV- Compatible</p>		<p>Toleranz (TOLERANCE)</p>	<p>Maßstab (SCALE): 1:2</p>	<p>Gewicht (WIGHT): g</p>		
<p>Rauheit (ROUGHNESS)</p> <p>$\sqrt{Rz 16 (Rz 6.3)}$</p>		<p>Werkstoff (MATERIAL):</p> <p>3.7165 (TI-Grade 5) ASTM B265</p>		<p>Bl. (page)</p> <p>A4</p>	<p>page</p> <p>1</p>	<p>pages</p> <p>2</p>
<p>origin name</p> <p>Workshop</p>	<p>DATE</p> <p>Design 27.02.2023</p> <p>Drawn 02.12.2024</p> <p>Check 02.12.2024</p> <p>Approv 02.12.2024</p>	<p>NAME</p> <p>AD</p> <p>AD</p> <p>JB</p> <p>AD</p>	<p>Benennung (DESCRIPTION):</p> <p>rotatable flange blank</p> <p>type ACF (Allectra Flange), TI</p>			
<p>origin</p> <p>(drw/sketch/part no)</p>	<p>date of origin</p> <p>28.07.2024</p>	<p>01</p> <p>Engraving added</p>	<p>Zeich. Nr. (Drw. No.):</p> <p>411-ACFBX-TI</p>		<p>REV</p> <p>01</p>	
<p>REV</p>	<p>Beschreibung (CHANGING)</p>	<p>LAST SAVE DAT.: 02.12.2024</p>	<p>part. no.</p>			



DETAIL U
MAßSTAB 1 : 1



POS-NR.	DESCRIPTION	MATERIAL	QTY
1	insert part for welding	3.7165 (Ti-Grade 5) ASTMB265	1
2	outer Ring for rotatable flange	3.7165 (Ti-Grade 5) ASTMB265	1
3 a	screw M2X7 DIN84	brass	1
3 b	screw M3X10 DIN551	brass	1
3 c	screw M5X12 DIN551	brass	1
3 d	screw M4X12 DIN551	brass	1
3 e	screw M5X12 DIN551	brass	1
3 f	screw M5X12 DIN551	brass	1
3 g	screw M5X12 DIN551	brass	1

3	Part No.	A	B	C	D	E	J +/-0,1	L	S°	W
a	411-ACFB-16	34	7,6	27,0	6x 4,4	6x M4	18,3	19,5	15	M2
b	411-ACFB-40	70	12,7	58,7	6x 6,8	6x M6	41,9	44	15	M3
c	411-ACFB-63	113,5	17,5	92,2	8x 8,4	8x M8	77,2	72	11,25	M5
d	411-ACFB-100	152	19,9	130,3	16x 8,4	16x M8	115,3	110	5,625	M4
e	411-ACFB-160	203	22,4	181,0	20x 8,4	20x M8	166,1	161	4,5	M5
f	411-ACFB-200	254	24,6	231,8	24x 8,4	24x M8	216,9	208	3,75	M5
g	411-ACFB-250	305	25,0	284,0	32x 8,4	32x M8	267,5	258	2,81	M5

Bemerkungen (Remarks)				Freimaßtoleranz (Standard Toleranz)		Maßstab (Scale)	Rauheit (Roughness)		europ.Projektion	
All informations provided in this drawing is considered to be confidential, proprietary and secret information. It is intended only for the use of individual or entity to whom it is sent. Individual or entity agrees to not disseminate or copy this information to anyone other than originally specified without the written consent Allectra GmbH.				Datum		1:2				
				Name						
				Design			27.02.2023		AD	
Drawn		02.12.2024		AD		Oberfläche (Treatment)				
Check		02.12.2024		JB		Bezeichnung (Title)		Gewicht (weight)		
						CF-Flange ISO3669-2		g		
						rotatable flange blank		Page: 2		
						type ACF (Allectra Flange), TI		Pages: 2		
						Zeichnungsnummer (Drawing No.)		Revision		
						411-ACFB-X-T		01		
Index		Modification		Datum		Name		Format		
								A4		
						Datei (File)		C:\PDM_Allectra\SEC041411\IC:\PDM_Allectra\SEC041411\		