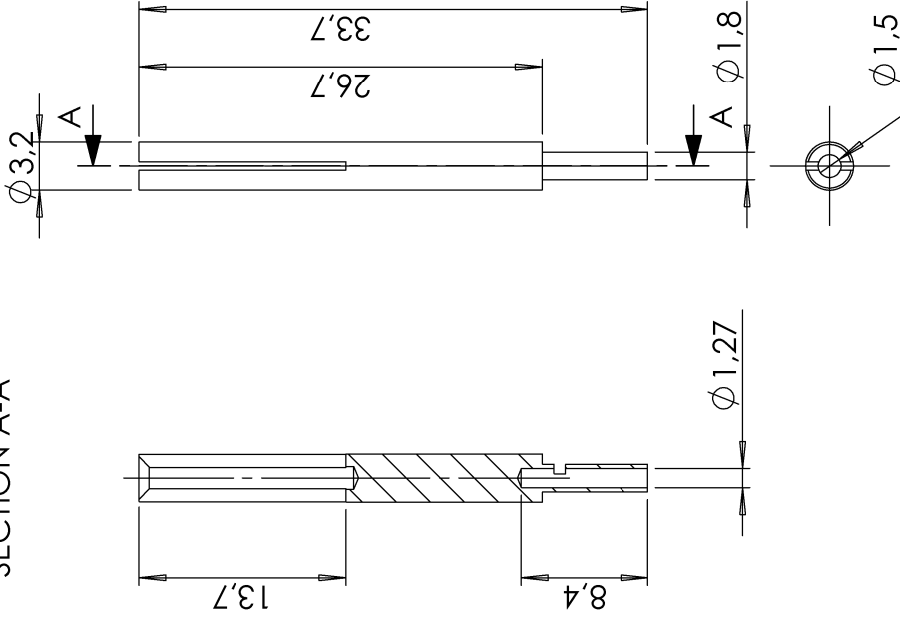


SECTION A-A



Bemerkungen (Remarks) All informations provided in this drawing is considered to be confidential, proprietary and secret information. It is intended only for the use of individual or entity to whom it is sent. Individual or entity agrees to not disseminate or copy this information to anyone other than originally specified without the written consent Allectra GmbH.	Freimaßtoleranz (Standard Toleranz)		Maßstab (Scale)	Rauheit (Roughness)	europ. Projektion (Projection)		
	Datum		2:1			Material, Standard Oberfläche (Treatment)	Konten (edges)
	Design	Datum	Name	TC-crimp contact CROMEL	Gewicht (weight)	9	
	Drawn	29.08.2013	JB				Bezeichnung (Title)
Check	10.11.2021	AD	Page:				1
Index	Modification	Datum	Name	Zeichnungsnummer (Drawing No.)	Revision		
				361-TCRIMP-CR	Format A4		
Datei (file)				c:\ppm_store\c:\ppm_store\			