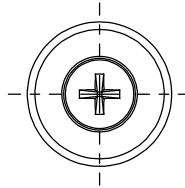
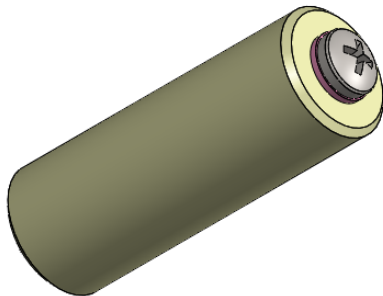
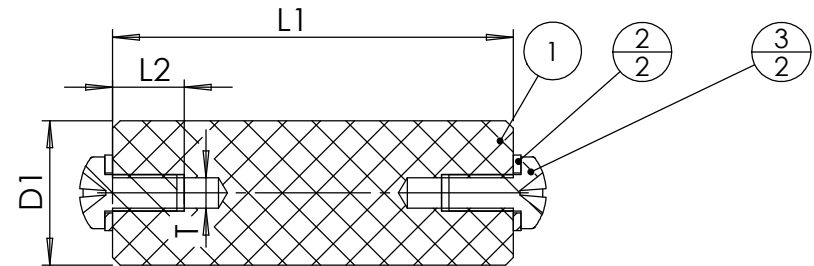


POS-NR.	DESCRIPTION	MATERIAL	QTY
1	CERAMIC STANDOFF	Ceramic	1
2	WASHER	Stainless Steel	2
3	SCREW	Stainless Steel	2

273-CSO-51-20
is shown



SECTION A-A



Bemerkungen (Remarks)				Freimaßtoleranz (Standard Tolerance)		Maßstab (Scale)		Rauheit (Roughness)		europ.Projektion									
All informations provided in this drawing is considered to be confidential, proprietary and secret information. If is intended only for the use of individual or entity to whom it is sent. Individual or entity agrees to not disseminate or copy this information to anyone other than originally specified without the written consent Allectra GmbH.				Datum		Name		Material, Standard Oberfläche (Treatment)		Kanten (edges)									
												Design		29.06.2015		JB		Gewicht (weight) 9	
												Drawn		09.01.2023		AD		Page: 1 Pages: 1	
Index				Modification		Date		Name		Revision									
Datei (File)				C:\PDMstore\C:\PDMstore\		Format		A4											

PART NO.	L1	D1	L2	T	SCREW
273-CSO-10-10	9,5	9,5	3,0	6-32 UNC	slotted-head
273-CSO-13-10	12,7	9,5	4,0	6-32 UNC	cross-head
273-CSO-51-20	50,9	19,1	9,5	10-32 UNF	cross-head
273-CSO-64-20	63,5	19,1	19,1	1/4-20 UNC	Hex-head
273-CSO-102-20	101,6	20	19,1	1/4-20 UNC	Hex-head



Zeichnungsnummer (Drawing No.)
273-CSO-X-X

Ceramic standoff