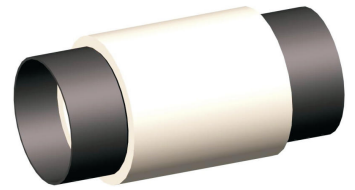
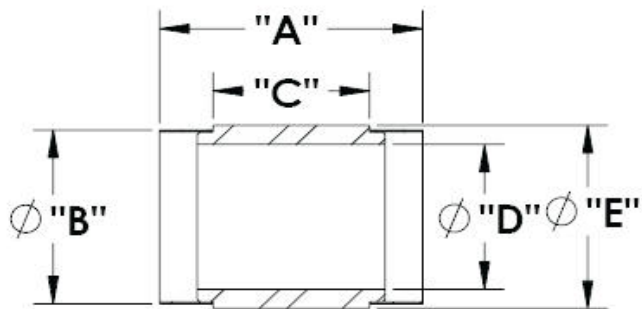


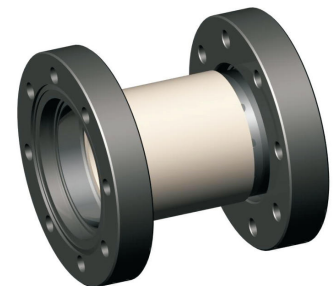
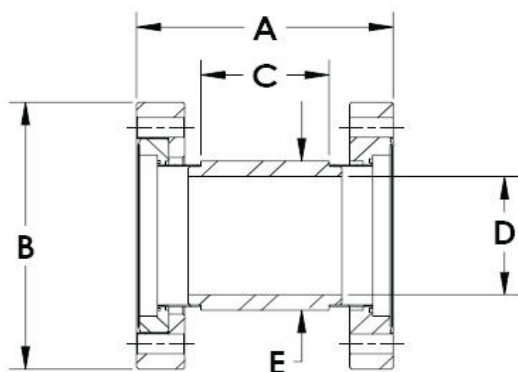
Ceramic Breaks / Elektrische Isolierzwischenstücke



Weldable versions:

Art. Nr.	Max. Voltage	A	B	C	D	E
271-CB10K-8	10KV	39	12.9	19	7.9	17
271-CB20K-23	20KV	66	30.5	38	22.9	36
271-CB30K-51	30KV	85	60.3	51	50.8	64
271-CB40K-61	40KV	111	71.1	76	61.0	76

all dimensions in mm



Flanged versions:

Art. Nr.	Max. Voltage	A	B	C	D	E
271-CB10K-8-C16	10KV	47	34 (CF16)	19	7.9	17
271-CB20K-23-C40	20KV	76	70 (CF40)	38	22.9	36
271-CB30K-51-C63	30KV	102	114 (CF63)	51	50.8	64
271-CB40K-61-C100	40KV	122	152 (CF100)	76	61.0	76

all dimensions in mm

As weldable versions are difficult to weld, we recommend the flanged versions
Da die Einschweißversionen schwierig zu handhaben sind, empfehlen wir die Flansch-Versionen

Last revised 2008-11-11

All data given in this sheet are carefully checked but are open to change at any time.