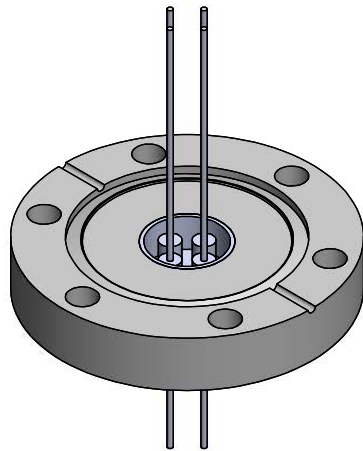
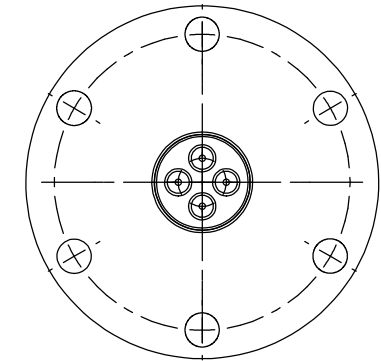
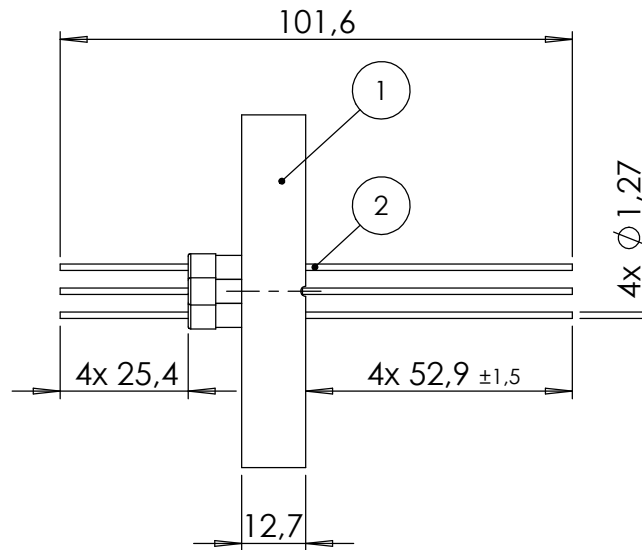
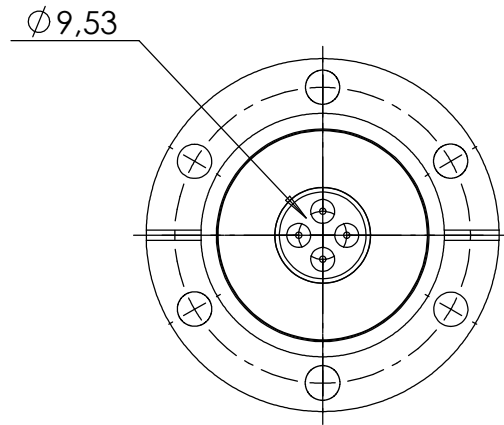


POS-NR.	DESCRIPTION	MATERIAL	QTY
1	modified flange DN40 CF	1.4404 (316L)	1
2	power fedthrough, 4 pins, 5KV, 25A		1



Bemerkungen (Remarks)				Freimaßtoleranz (Standard Tolerance)		Maßstab (Scale)	Rauheit (Roughness)	europ.Projektion		
All informations provided in this drawing is considered to be confidential, proprietary and secret information. If is intended only for the use of individual or entity to whom it is sent. Individual or entity agrees to not disseminate or copy this information to anyone other than originally specified without the written consent Allectra GmbH.						1:1.5				
										Kanten (edges)
				Datum	Name	Material, Standard Oberfläche (Treatment)		Gewicht (weight) <b>g</b>		
				Design	31.01.2023	AD	<b>1 off power feedthrough, 4 pin, 5KV, 25A on flange DN40 CF</b>		Page: <b>1</b> Pages: <b>1</b>	
				Drawn	31.01.2023	AD				
				Check						
						Zeichnungsnummer (Drawing No.)		Revision		
						264-13CU5K-4-C40				
Index	Modification	Date	Name	Datei (File)		C:\PDMstore\C:\PDMstore\		Format <b>A4</b>		