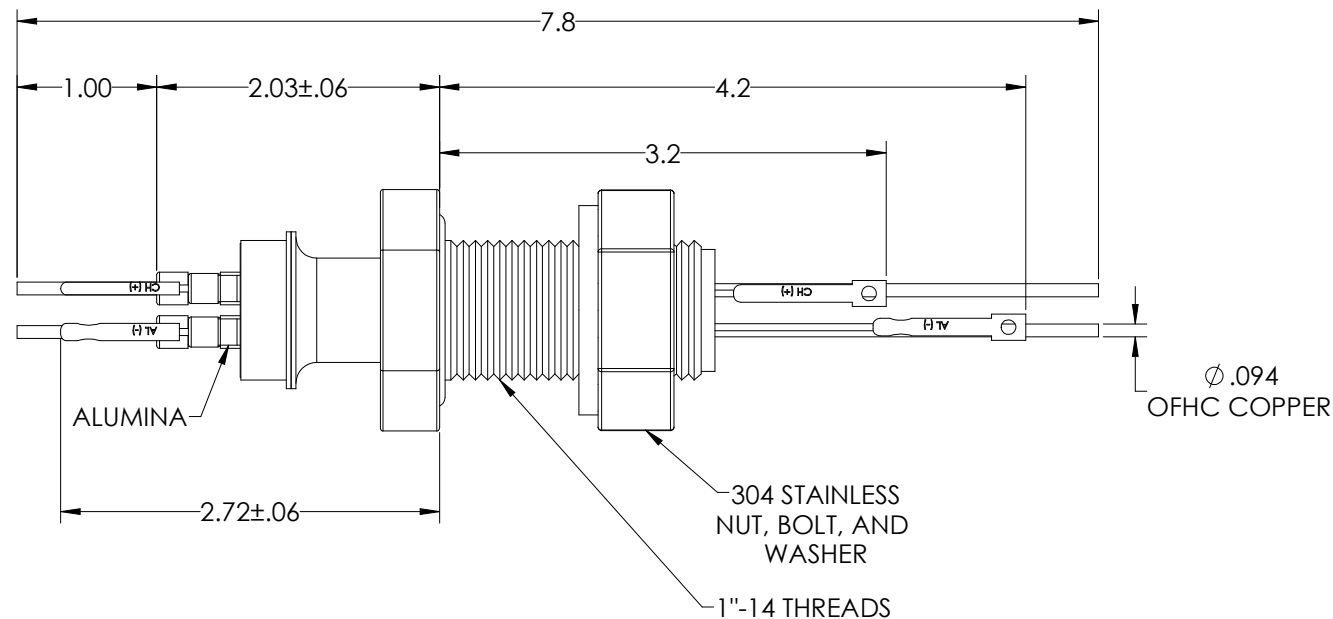
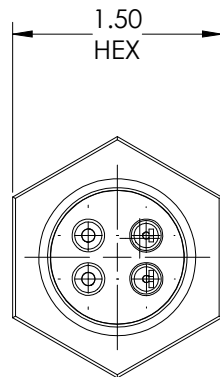
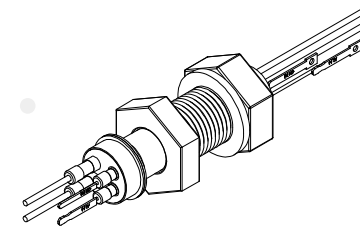


MPF PRODUCTS INC.



PART #	T/C TYPE	Allectra Part no.
A5239-1-BP	K	SPC-24778 + 263-TCK-1-CU50-2-BP
A5239-2-BP	J	
A5239-3-BP	C	263-TCC-1-CU50-2-BP
A5239-4-BP	E	

SPECIFICATIONS:

- VOLTAGE: 5000 VOLTS DC
- CURRENT: 50 AMPS
- TEMPERATURE RATING: -100 TO 450°C
- LEAK RATE < 1×10^{-9} ATM CC/SEC HE

263-TCx-1-CU50-2-BP Rev. 00

Thermocouple-Power Feedthrough, 1 Pair , w/ Miniature TC Connector, 5000 Volts, 50 Amps 2 Pins, 1" Baseplate

UNLESS OTHERWISE SPECIFIED:		QUOTATION #	
DIMENSIONS ARE IN INCHES		N/A	
TOLERANCES:		MPF PRODUCTS INC.	
DRAWN	WJ 9/11/2015	TITLE:	
CHECKED	WJ 9/11/2015	THERMOCOUPLE-POWER,	
ENG APPR.	WJ 9/11/2015	1 PAIR, 5000V, 50A,	
THIRD ANGLE:		2 PINS, 1" BASEPLATE	
MATERIAL		DOWNLOADED FROM MPFPI.COM	
FINISH		DWG. NO.	
PLATING		A5239	
UNLESS OTHERWISE SPECIFIED:		REV	
ALL DIAMETERS CONCENTRIC WITHIN .005		Tuesday, June 4, 2019 4:23:10 PM	
REMOVE ALL BURRS AND SHARP EDGES		SHEET 1 OF 1	