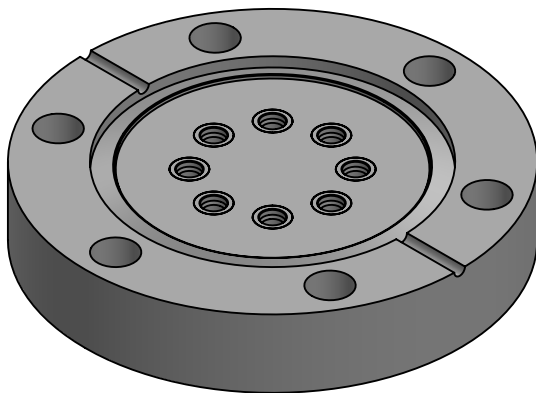
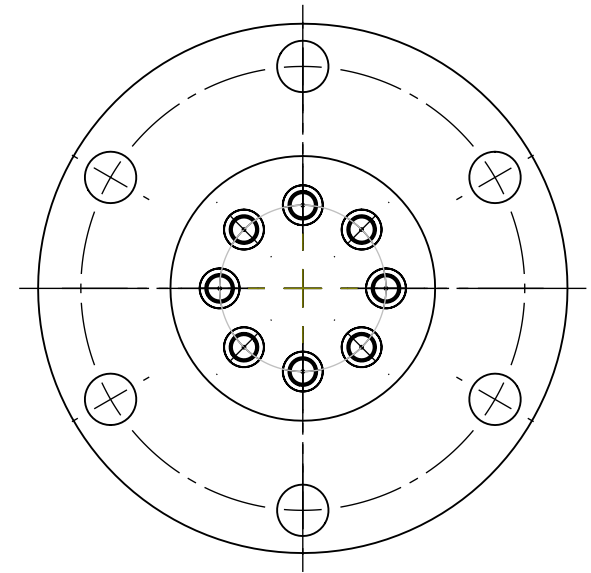
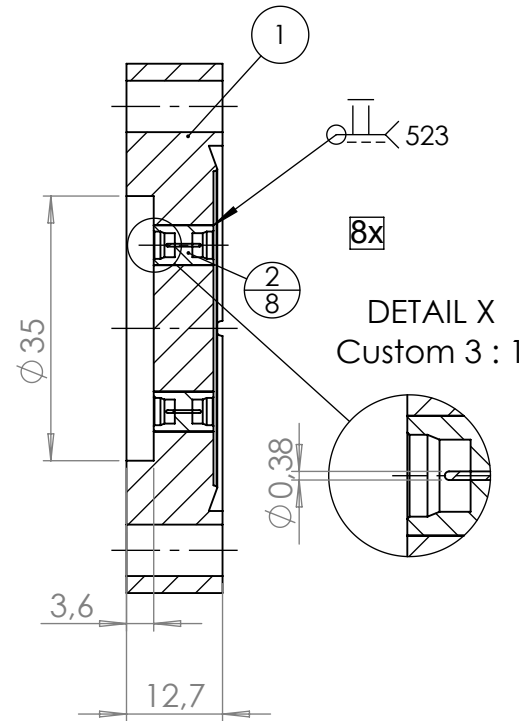
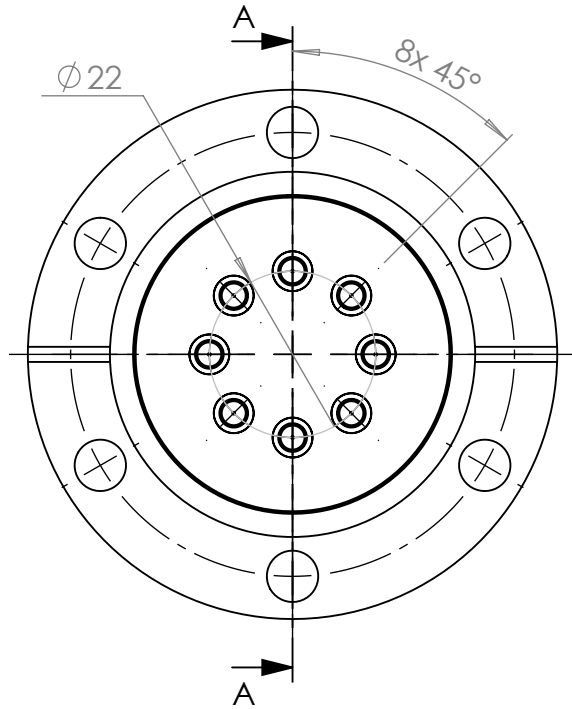


| POS. NO. | DESCRIPTION | MATERIAL | QTY |
|----------|--|---------------|-----|
| 1 | modified flange DN40 CF | 1.4404 (316L) | 1 |
| 2 | SMP feedthrough, double sided, smooth bore | 1.4306 (304L) | 8 |

SECTION A-A



<1 E-10 mbar*/sec, He, according to DIN EN 1779-A3
Definition Leckprüfung (definon leak check)

| | | | | | | | | | |
|--|--|---|--|---------------------------------------|--|--|--|------------|--|
| Zeichnung Nutzung (SCOPE OF DRAWING) Drawing external usage for customer | | Prüfung Zubehör. (CON + HSG CHECK) | | Bemerkung (REMARKS) | | Kanten (EDGES) | | PROJECTION | |
| All informations provided in this drawing is considered to be confidential, proprietary and secret information. It is intended only for the use of individual or entity to whom it is sent. Individual or entity agrees to not disseminate or copy this information to anyone other than originally specified without the written consent Allectra GmbH. | | Werkstoff (MATERIAL): | | Gewicht (WEIGHT): | | Toleranz (TOLERANCE) DIN EN ISO 13920-C (welding ASSY) | | | |
| | | Oberfläche (SURFACE) Cleaned UHV- Compatible | | Maßstab (SCALE): 1:1 | | Format. (FORM) A4 | | | |
| name Allectra standard | | DATE | | NAME | | Benennung (DESCRIPTION): 8 off SMPD f/t, double sided, smooth bore on flange DN40 CF | | | |
| (drw/doc/sketch) | | Design 17.09.2024 | | AD | | | | | |
| date | | Drawn 17.09.2024 | | AD | | | | | |
| REV | | Check 17.09.2024 | | JB | | | | | |
| 00 first origin | | Approv 17.09.2024 | | AD | | Zeich. Nr. (Drw. No.): 242-SMPD-SD-C40-8 | | | |
| REV Beschreibung (CHANGING) | | gesp. am (SAVE DAT.): 17.09.2024 | | Art. Nr. (PART NO.) 242-SMPD-SD-C40-8 | | REV 00 | | | |